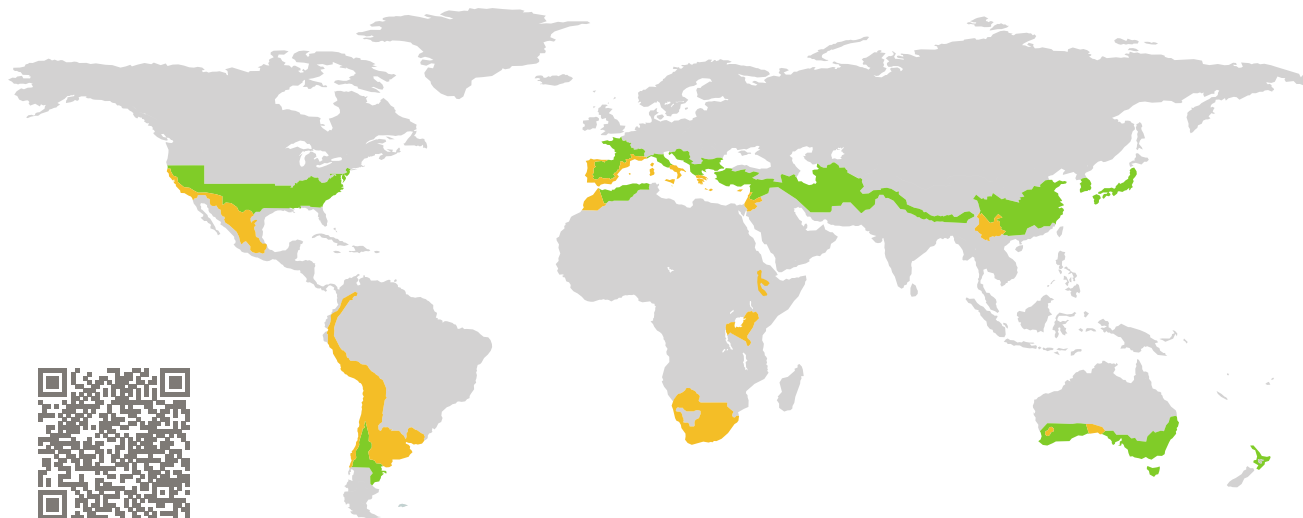


# CERTIFICATE

Certified Passive House Component

Component-ID 0930wi03 valid until 31st December 2017

Passive House Institute  
Dr. Wolfgang Feist  
64283 Darmstadt  
Germany

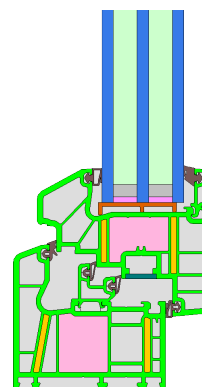


Category: **Window frame**  
Manufacturer: **Dalian Shide Science & Technology Development Co. Ltd.,  
Dalian,  
People's Republic of China**  
Product name: **Shide PVC\_PBT Window**

**This certificate was awarded based on the following criteria for the warm, temperate climate zone**

Comfort  $U_W = 0.99 \leq 1.00 \text{ W}/(\text{m}^2 \text{ K})$   
 $U_{W,\text{installed}} \leq 1.05 \text{ W}/(\text{m}^2 \text{ K})$   
with  $U_g = 0.90 \text{ W}/(\text{m}^2 \text{ K})$

Hygiene  $f_{Rsi=0.25} \geq 0.65$



Passive House  
efficiency class

phE

phD

phC

phB

phA

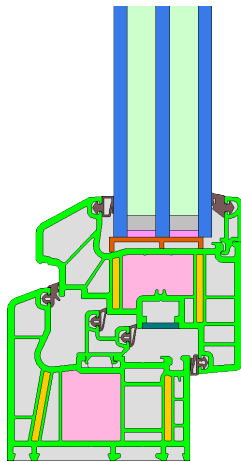
warm, temperate climate



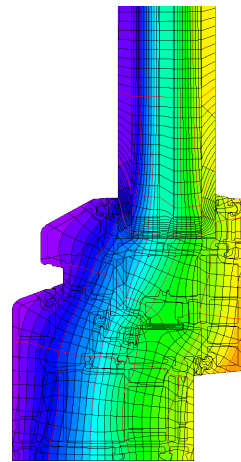
ph B

**CERTIFIED  
COMPONENT**

Passive House Institute



Calculation model



Isothermal

### Description

Construction: PVC frame with insulation ( $\lambda = 0.040 \text{ W/(mK)}$ ) inside the frame. Pane thickness: 43 mm (6/12,5/6/12,5/6), rebate depth: 18 mm, spacer: phA-Spacer with polysulfide-sealing.

### Explanation


The window U-values were calculated for the test window size of  $1.23 \text{ m} \times 1.48 \text{ m}$  with  $U_g = 0.70 \text{ W/(m}^2 \text{ K)}$ . If a higher quality glazing is used, the window U-values will improve as follows:

|         |         |      |      |      |      |                      |
|---------|---------|------|------|------|------|----------------------|
| Glazing | $U_g =$ | 0.90 | 0.80 | 0.70 | 0.64 | W/(m <sup>2</sup> K) |
|         |         | ↓    | ↓    | ↓    | ↓    |                      |
| Window  | $U_W =$ | 0.99 | 0.92 | 0.86 | 0.81 | W/(m <sup>2</sup> K) |

Transparent building components are classified into efficiency classes depending on the heat losses through the opaque part. The frame U-Values, frame widths, thermal bridges at the glazing edge, and the glazing edge lengths are included in these heat losses. A more detailed report of the calculations performed in the context of certification is available from the manufacturer.

The Passive House Institute has defined international component criteria for seven climate zones. In principle, components which have been certified for climate zones with higher requirements may also be used in climates with less stringent requirements. In a particular climate zone it may make sense to use a component of a higher thermal quality which has been certified for a climate zone with more stringent requirements.

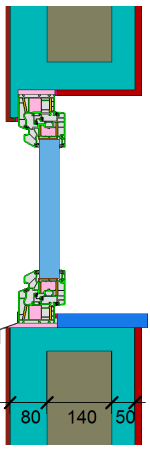
Further information relating to certification can be found on [www.passivehouse.com](http://www.passivehouse.com) and [passipedia.org](http://passipedia.org).

| Frame values |      |   | Frame width<br>$b_f$<br>mm | $U$ -value frame<br>$U_f$<br>W/(m <sup>2</sup> K) | $\Psi$ -glass edge<br>$\Psi_g$<br>W/(m K) | Temp. Factor<br>$f_{Rsi=0.25}$<br>[-] |
|--------------|------|---|----------------------------|---|---|---------------------------------------|
| Top          | (to) |  | 116                        | 0.91  | 0.036                                     | 0.71                                  |
| Side         | (s)  |  | 116                        | 0.91  | 0.036                                     | 0.71                                  |
| Bottom       | (bo) |  | 116                        | 0.91  | 0.036                                     | 0.71                                  |
|              |      |   | Spacer: PHI pH A Spacer    |   | Secondary seal: Polysulfide               |                                       |

### Validated installations

**Formwork blocks (operable)**

$U_{Wall} = 0.25 \text{ W/(m}^2 \text{ K)}$

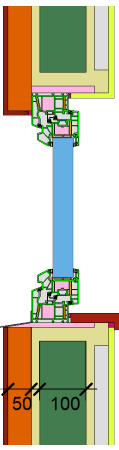


| $\Psi_{install}$ | W/(m K) |
|------------------|---------|
| Top              | 0.006   |
| Side             | 0.006   |
| Bottom           | 0.015   |

$U_{W,installed} = 1.02 \text{ W/(m}^2 \text{ K)}$

**Lightweight timber (operable)**

$U_{Wall} = 0.24 \text{ W/(m}^2 \text{ K)}$

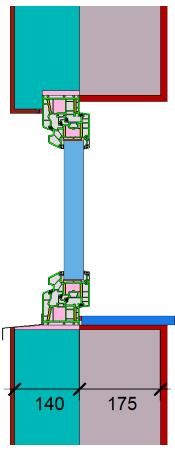


| $\Psi_{install}$ | W/(m K) |
|------------------|---------|
| Top              | 0.006   |
| Side             | 0.006   |
| Bottom           | 0.014   |

$U_{W,installed} = 1.02 \text{ W/(m}^2 \text{ K)}$

**Exterior insulation and finishing system (EIFS) (operable)**

$U_{Wall} = 0.23 \text{ W/(m}^2 \text{ K)}$



| $\Psi_{install}$ | W/(m K) |
|------------------|---------|
| Top              | 0.002   |
| Side             | 0.002   |
| Bottom           | 0.011   |

$U_{W,installed} = 1.00 \text{ W/(m}^2 \text{ K)}$

