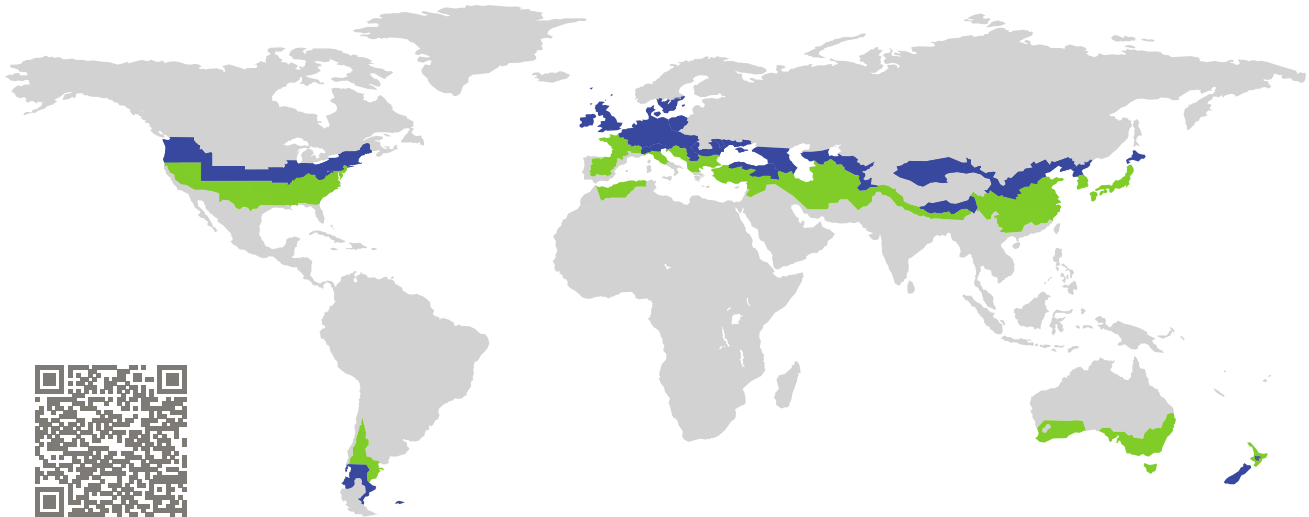


CERTIFICATE

Certified Passive House Component

Component-ID 0221ic03 valid until 31st December 2017

Passive House Institute
Dr. Wolfgang Feist
64283 Darmstadt
Germany

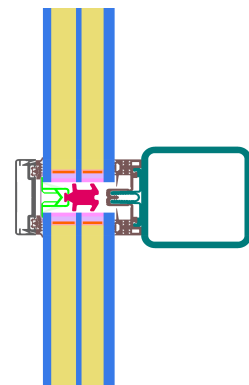


Category: **Glas roof**
Manufacturer: **SCHÜCO International KG,
Bielefeld,
Germany**
Product name: **Schüco AOC 60 ST.SI (schräg)**

**This certificate was awarded based on the following
criteria for the cool, temperate climate zone**

Comfort $U_{CW,i} = 0.81 \leq 1.00 \text{ W}/(\text{m}^2 \text{ K})$
 $U_{CW,i,\text{installed}} \leq 1.00 \text{ W}/(\text{m}^2 \text{ K})$
with $U_g = 0.72 \text{ W}/(\text{m}^2 \text{ K})$

Hygiene $f_{Rsi=0.25} \geq 0.70$



Passive House
efficiency class

phE

phD

phC

phB

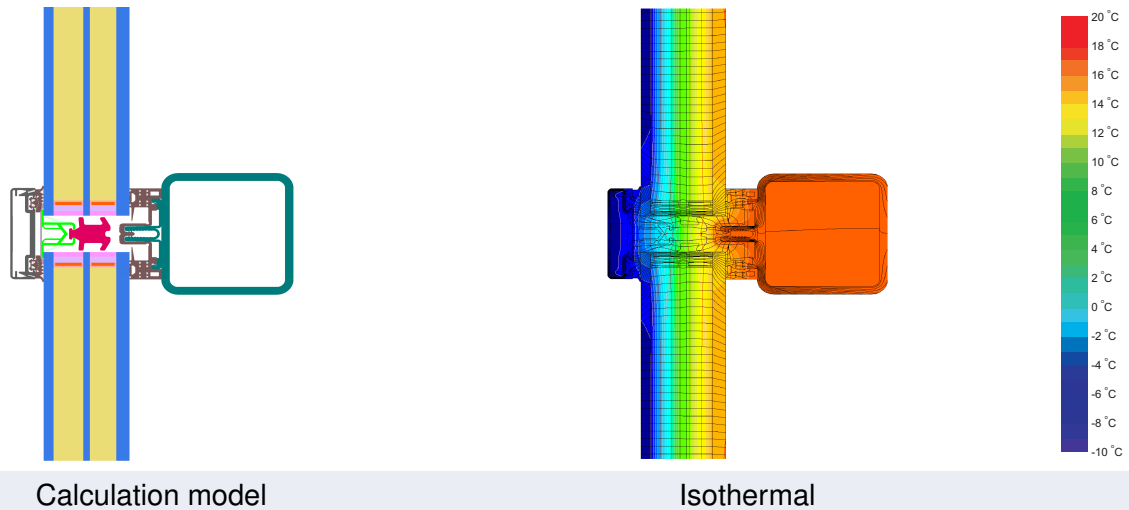
phA

cool, temperate climate



**CERTIFIED
COMPONENT**

Passive House Institute



Description

Steel construction, with steel system carrier. Covering- and pressure-strip from aluminium. PE-foam insulator in the glazing rebate (0,040 W/(mK)), cover by aluminium foil on the inside. Screw- and Glass carrier losses measured by ift Rosenheim. Used Pane: 46 mm (6/18/4/16/8), intersection of the Glass: 18 mm. Used spacer: SwisspV PU

Explanation






The window U-values were calculated for the test window size of 1.20 m × 2.50 m with $U_g = 0.70 \text{ W}/(\text{m}^2 \text{ K})$. If a higher quality glazing is used, the window U-values will improve as follows:

Glazing	$U_g =$	0.72	0.83	0.76	0.68	W/(m ² K)
		↓	↓	↓	↓	
Element	$U_{CW,i}$	0.81	0.93	0.86	0.79	W/(m ² K)

Transparent building components are classified into efficiency classes depending on the heat losses through the opaque part. The frame U-Values, frame widths, thermal bridges at the glazing edge, and the glazing edge lengths are included in these heat losses. A more detailed report of the calculations performed in the context of certification is available from the manufacturer.

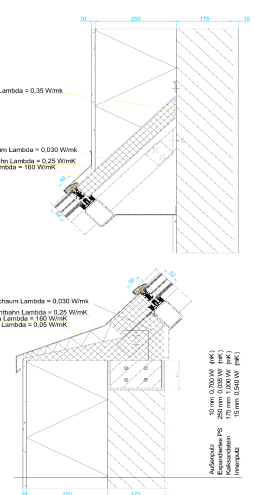
The Passive House Institute has defined international component criteria for seven climate zones. In principle, components which have been certified for climate zones with higher requirements may also be used in climates with less stringent requirements. In a particular climate zone it may make sense to use a component of a higher thermal quality which has been certified for a climate zone with more stringent requirements.

Further information relating to certification can be found on www.passivehouse.com and passipedia.org.

Frame values		Frame width b_f mm	U -value frame U_f^1 W/(m ² K)	Ψ -glass edge Ψ_g W/(m K)	Temp. Factor $f_{Rsi=0.25}$ [-]	
Top fixed	(tof)		60	0.97	0.035	0.80
Side fixed	(sf)		60	0.97	0.035	0.80
Bottom fixed	(bof)		60	0.97	0.035	0.80
Mullion fixed	(m)		60	0.97	0.035	0.80
Transom fixed	(tf)		60	0.97	0.035	0.80
		Spacer: SWISSPACER V		Secondary seal: Polysulfide		
Thermal glass carrier bridge ² $\chi_{GT} = 0.004$ W/K						

Validated installations

Exterior insulation and finishing system (EIFS) (fixed glazed)



$\Psi_{install}$	W/(m K)
Top	0.035
Left	0.092
Right	0.092
Bottom	0.092

$U_{W,installed} = 0.93$ W/(m² K)

¹Includes $\Delta U = 0.22$ W/(m² K). *CWgemessen*

²*CWgemessen* . *CWgctype* : Non-Metallic Glass Carrier with Screws

