

Certificate

Certified Passive House component

for cool, temperate climate, valid until 31.12.2018

Category: **Facade anchor**
 Manufacturer: **innofixx equipment GmbH**
13599 Berlin, GERMANY
 Product name: **Thermisches Entkopplungs-
 element**

The following criteria were used in
 awarding this certificate:

Efficiency Criterion

In a typical application*, the construction fulfills the requirements of

$$\text{Eff.}_{fa} \leq 0.200 \text{ W/(kNK)}$$

Comfort Criterion

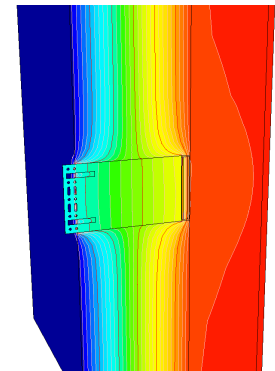
The inner surface must be warm enough to prevent mould as well as uncomfortable down-draught and radiation losses.

$$\theta_{i,min} \geq 17^\circ\text{C}$$

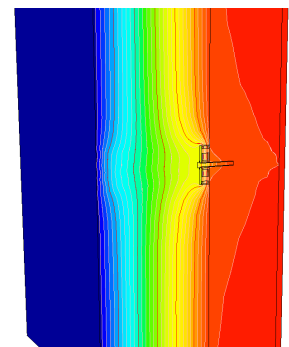
Thermal data of the certified component

innofixx - Thermisches Entkopplungs- element	thermal bridge coefficient χ [W/K]	minimum inner surface temperature $\theta_{i,min}$ [°C]
Fixed point	0.0238	19.24
Sliding point	0.0077	19.13

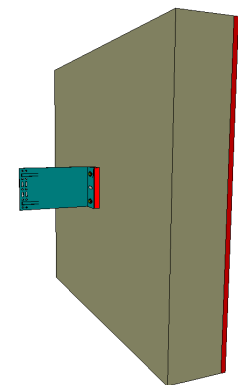
* The criterion has been validated with a representative facade of a school building



Isothermal map of the fixed point



Isothermal map of the sliding point



Representation of the fixed point

cool, temperate climate



**CERTIFIED
 COMPONENT**

Passive House Institute

Data sheet innofixx equipment GmbH, Thermisches Entkopplungselement

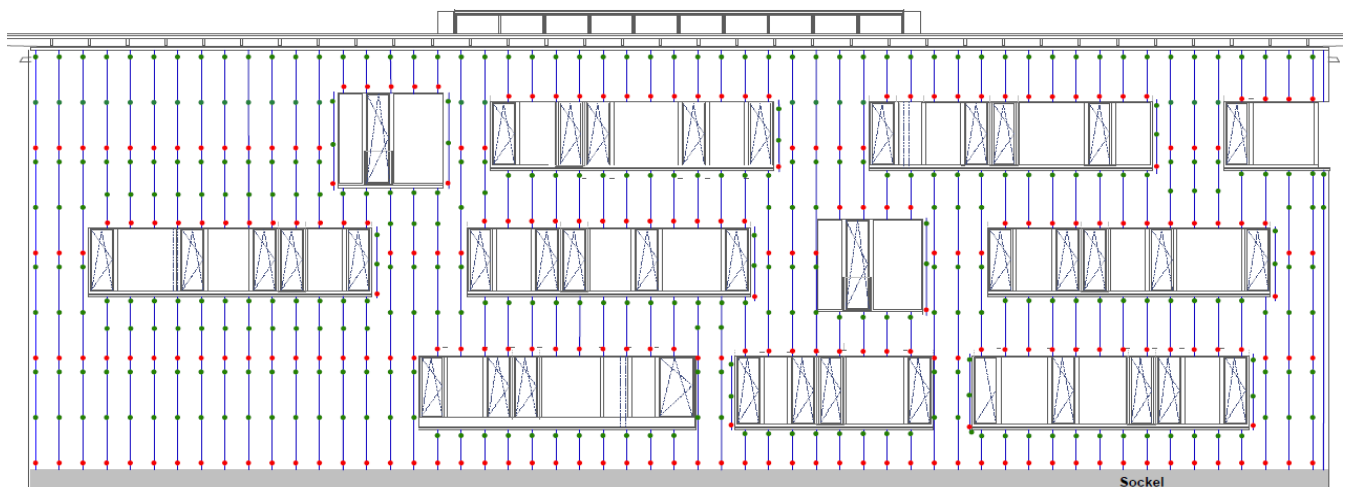
Manufacturer innofixx equipment GmbH
 Zitadellenweg 34 (Halle603), 13599 Berlin
 Tel.: 030 – 683 21 728
 www.innofix.com

Criteria validated based on reference facade	ΔU [W/m²K]
LC VI	0.0296

In order to validate the suitability, the manufacturer provides a static calculation and an associated installation plan for the reference facade.

The classification criteria and the load class allocation can be found in the current criteria "Zertifizierte Passivhaus Komponente – Fassadenanker, Version 2.0, 08.05.2017".

Load class / Facade weight		Thermal bridge coefficients [W/K]			
LC	[kN/m ²]	X _{FP}	-	X _{SP}	-
VI	0.58	0.0238		0.0077	
Efficiency	ΔU	Quantity / m ²			
[W/(kNK)]	[W/m ² K]	FP1	FP2	SP1	SP2
0.0511	0.0296	0.84		1.26	



Installation-plan reference facade of the certified component

Load-class (LC)	Facade cladding	Facade weight [kN/m ²]	Efficiency criterion fulfilled?
I	Aluminium laminated	0.10	no
II	Plastic	0.15	yes
III	Fibre-cement plates	0.20	yes
IV	Acrylic glass	0.25	yes
V	Ceramics	0.30	yes
VI	Concrete	0.58	yes