

Certificate

Thermal Bridge Free Connection

for cool, temperate climate, valid until 31.12.2019

Category: **Facade anchor**
 Manufacturer: **mCon Manfred Hoffmann**
D-57258 Freudenberg
 Product name: **mCon Handline-Reihe**

The following criteria were used in awarding this certificate:

Efficiency Criterion

In two typical applications*, the construction is

$$\Delta U_{WB} \leq 0,010 \text{ W}/(\text{m}^2\text{K})$$

Comfort Criterion

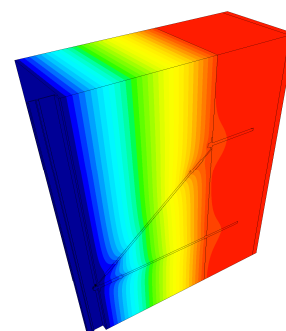
The inner surface must be warm enough to prevent mould as well as uncomfortable down-drought and radiation losses.

$$\theta_{i,\min} \geq 17^\circ\text{C}$$

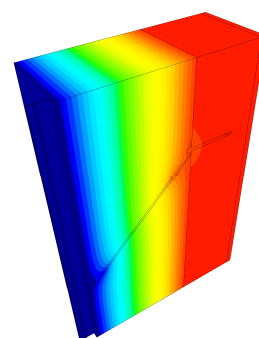
Thermal data of the window frame

Typ	thermal bridge coefficient χ [W/K]	minimum inner surface temperature $\theta_{i,\min}$ [°C]
Triangle	0.003	19.48
Horizontal rod	0.002	19.48
Angular rod	0.001	19.50

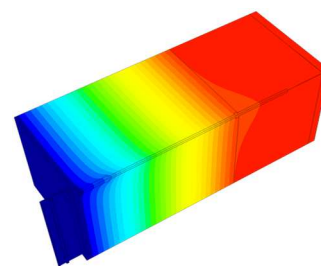
* The criterion was validated on both, a row house and a school building.



Isothermal map of the triangle



Isothermal map of the angular rod



Isothermal map of the horizontal rod

cool, temperate climate



CERTIFIED COMPONENT

Passive House Institute