

Certificate

Certified Passive House Component

for cool, temperate climate, valid until 31.12.2018

Passive House Institute
Dr. Wolfgang Feist
64283 Darmstadt
GERMANY

Category: **Balcony connection**
Slab thickness 160 - 250 mm
Manufacturer: **Schöck Bauteile GmbH**
76534 Baden-Baden, GERMANY
Product name: **Schöck Isokorb® Typ KXT-Combar**

The following criteria were used in awarding this certificate:

Efficiency Criterion

In two typical applications*, the construction fulfills the requirement of

$$\Delta U_{WB} \leq 0.010 \text{ W}/(\text{m}^2\text{K})$$

Comfort Criterion

The inner surface must be warm enough to prevent mould as well as uncomfortable down-draught and radiation losses.

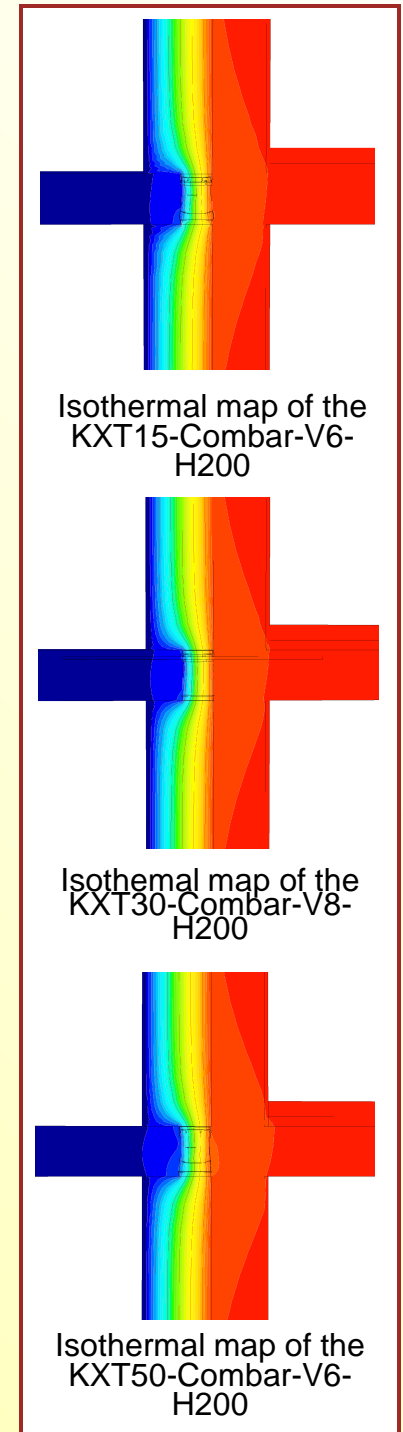
$$\theta_{i,\min} \geq 17^\circ\text{C}$$

Following heat transmission coefficients ψ [W/(mK)] have been validated:

Product	slab thickness [mm]			
	180	200	220	250
KXT15-Combar-V6	-	0.074	-	-
KXT15-Combar-V8	-	0.080	-	-
KXT25-Combar-V6	-	0.078	-	-
KXT25-Combar-V8	-	0.084	-	-
KXT30-Combar-V6	0.082	0.085	-	0.093
KXT30-Combar-V8	0.091	0.094	-	0.103
KXT40-Combar-V6	-	0.090	-	-
KXT40-Combar-V8	-	0.098	-	-
KXT45-Combar-V6	-	0.098	-	-
KXT50-Combar-V6	-	0.104	-	-

* The criterion was validated on both, a row house and a apartment dwelling.
(according to criteria "balcony connection" v2.1.1)
The certificate includes types with minor statical performance.
Thermal bridge coefficients can be approximated by linear interpolation.

www.passivehouse.com



cool, temperate climate



CERTIFIED COMPONENT

Passive House Institute