

Certificate

valid until 31.12.2018

 **Passivhaus
Institut**
Dr. Wolfgang Feist
Rheinstraße 44/46
D-64283 Darmstadt

Balcony connection

Low Energy Component

**Schöck Isokorb®
Typ KXT-Combar
160 - 250 mm slab thickness**

**Manufacturer: Schöck Bauteile GmbH
76534 Baden-Baden, GERMANY**

The following criteria were used in awarding this certificate:

Efficiency Criterion

In two typical applications¹⁾, the construction is

$$\Delta U_{WB} < 0,025 \quad \text{W/(m}^2\text{K)}$$

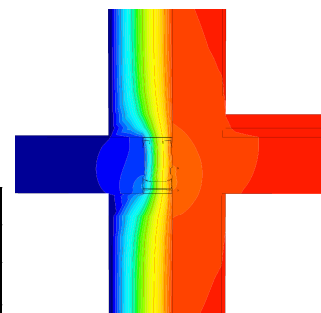
Comfort Criterion

The inner surface must be warm enough to prevent mould as well as uncomfortable down-draught and radiation losses.

$$\theta_{i,min} > 17,00 \quad \text{°C}$$

Following heat transmission coefficients ψ [W/(mK)]
have been validated:

Product	slab thickness [mm]			
	180	200	220	250
KXT60-Combar-V10	-	0.150	-	-
KXT75-Combar-V10	-	0.162	-	-
KXT95-Combar-V10	-	0.176	-	0.181



Isothermal map of the
KXT95-Combar-V10-H250

¹⁾ The criterion was validated on both, a row house and an apartment dwelling (according to criteria "balcony connection" v2.1.1). The certificate includes types with minor static performance. The thermal bridge coefficient can be approximated by linear interpolation

