

Certificate

Certified Passive House component

for cool, temperate climate, valid until 31.12.2019

Passive House Institute
Dr. Wolfgang Feist
64283 Darmstadt
GERMANY

Category: **Facade anchor**
 Manufacturer: **Schöck Bauteile GmbH**
76534 Baden-Baden, GERMANY
 Product name: **Isolink® TA-S**

The following criteria were used in awarding this certificate:

Efficiency Criterion

In a typical application*, the construction fulfills the requirements of

$$\text{Eff. fa} \leq 0.200 \text{ W/(kNK)}$$

Comfort Criterion

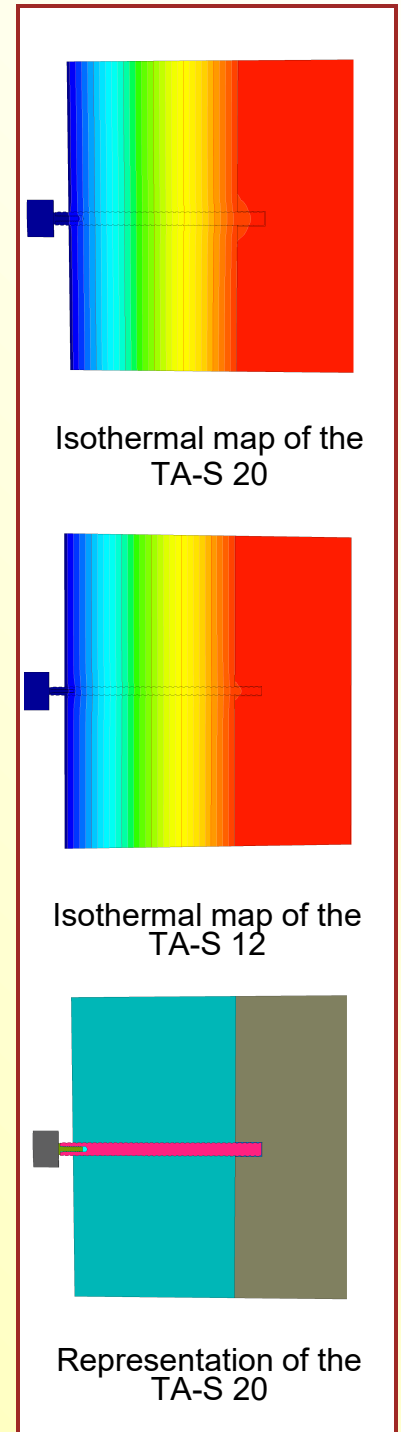
The inner surface must be warm enough to prevent mould as well as uncomfortable down-draught and radiation losses.

$$\theta_{i,\min} \geq 17^\circ\text{C}$$

Thermal data of the certified component

Schöck Isolink® TA-S	thermal bridge coefficient	minimum inner surface temperature
	χ [W/K]	$\theta_{i,\min}$ [°C]
Isolink TA-S 12	0.0003	19.47
Isolink TA-S 16	0.0005	19.47
Isolink TA-S 20	0.0008	19.46

* The criterion has been validated with a representative facade of a school building



Data sheet

Schöck Bauteile GmbH, Isolink TA-S

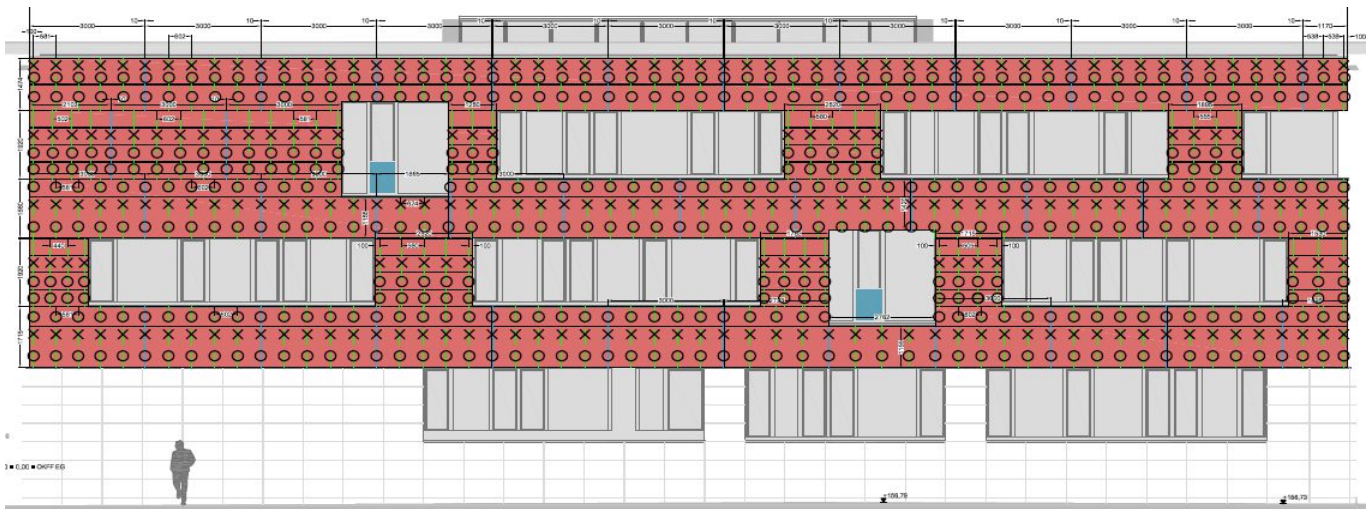
Manufacturer Schöck Bauteile GmbH
 Vimbacher Str. 2, 76534 Baden-Baden, GERMANY
 Tel.: +49 7223 967-0
 www.schoeck.de

Validation on reference facade	ΔU [W/m²K]
LK VI	0.0025

In order to validate the suitability, the manufacturer provides a static calculation and an associated installation plan for the reference facade.

The classification criteria and the load class allocation can be found in the current criteria "Zertifizierte Passivhaus Komponente – Fassadenanker, Version 2.0, 08.05.2017".

Load class / Facade weight		Thermal bridge coefficients [W/K]			
-	[kN/m ²]	X _{TA-S20}	-	X _{TA-S12}	X _{TA-S16}
VI	0.4	0.0008		0.0003	0.0005
[W/(kNK)]	[W/m ² K]	Quantity / m ²			
Efficiency	ΔU	FP1	FP2	SP1	SP2
0.0060	0.0025	1.66		3.40	



Installation-plan reference facade of the certified component

Load-class	Facade cladding	Facade weight [kN/m ²]	Efficiency criterion fulfilled?
I	Aluminium laminated	0.10	yes
II	Plastic	0.15	yes
III	Fibre-cement plates	0.20	yes
IV	Acrylic glass	0.25	yes
V	Ceramics	0.30	yes
VI	Stone	0.40	yes