
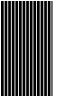


# Certificate

valid until 31.12.2018

 **Passivhaus  
Institut**  
Dr. Wolfgang Feist  
Rheinstraße 44/46  
D-64283 Darmstadt



## Balcony connection

with height offset

**Low Energy  
Component**

**Schöck Isokorb® Type KXT  
160-250mm slab thickness**

**Manufacturer: Schöck Bauteile GmbH  
Vimbucher Str. 2 76354 Baden-Baden**

The following criteria were used in awarding this certificate:

### Efficiency Criterion

In two typical applications<sup>\*)</sup>, the construction is

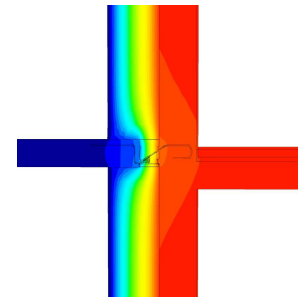
$$\Delta U_{WB} < 0,025 \quad \text{W/(m}^2\text{K)}$$

### Comfort Criterion

The inner surface must be warm enough to prevent mould as well as uncomfortable down-drought and radiation losses.

$$\theta_{i,min} > 17,00 \quad ^\circ\text{C}$$

Following heat transmission coefficients ( $\Psi$  [W/(mK)])  
were validated:



Isothermal map of  
KXT30-BH15

Product	Slab thickness				
	160	180	200	220	250
KXT30-HV15	-	0.137	-	-	-
KXT30-BH15	-	0.134	-	-	-

<sup>\*)</sup> The criterion was validated on both, a row house and a apartment dwelling  
(according to criteria "balcony connection" v2.1.1)

The certificate includes types with minor statical performance. The thermal bridge  
coefficient can be approximated by linear interpolation

