
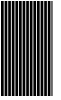


Certificate

valid until 31.12.2018

 **Passivhaus
Institut**
Dr. Wolfgang Feist
Rheinstraße 44/46
D-64283 Darmstadt



Balcony connection

Wall Connection

Low Energy
Component

Schöck Isokorb® Type KXT
160-250mm slab thickness

Manufacturer: **Schöck Bauteile GmbH**
Vimbucher Str. 2 76354 Baden-Baden

The following criteria were used in awarding this certificate:

Efficiency Criterion

In two typical applications^{*)}, the construction is

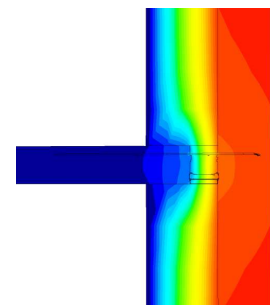
$$\Delta U_{WB} < 0,025 \quad \text{W/(m}^2\text{K)}$$

Comfort Criterion

The inner surface must be warm enough to prevent mould as well as uncomfortable down-draught and radiation losses.

$$\theta_{i,min} > 17,00 \quad ^\circ\text{C}$$

Following heat transmission coefficients (Ψ [W/(mK)])
were validated:



Isothermal map of
KXT30-WO

Product	Slab thickness				
	160	180	200	220	250
KXT30-WO	-	0.156	-	-	-
KXT30-WU	-	0.154	-	-	-

^{*)} The criterion was validated on both, a row house and a apartment dwelling
(according to criteria "balcony connection" v2.1.1)

The certificate includes types with minor statical performance. The thermal bridge
coefficient can be approximated by linear interpolation

