

Certificate

Certified Passive House component

for cool, temperate climate, valid until 31.12.2018

Passive House Institute
Dr. Wolfgang Feist
64283 Darmstadt
GERMANY

Category: **Facade anchor**
 Manufacturer: **Schöck Bauteile GmbH**
76534 Baden-Baden, GERMANY
 Product name: **Schöck Thermoanker**

The following criteria were used in awarding this certificate:

Efficiency Criterion

In two typical applications*, the construction fulfills the requirements of

$$\Delta U_{WB} \leq 0.010 \text{ W/(m}^2\text{K)}$$

Comfort Criterion

The inner surface must be warm enough to prevent mould as well as uncomfortable down-draught and radiation losses.

$$\theta_{i,min} \geq 17^\circ\text{C}$$

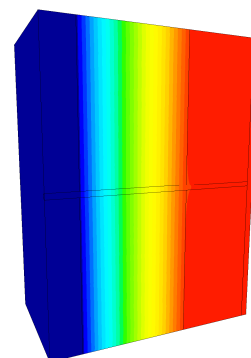
Thermal data of the certified component

Schöck Thermoanker	thermal bridge coefficient	minimum inner surface temperature
	χ [W/K]	$\theta_{i,min}$ [°C]
TA-H	0.0004	19.47
TA-D	0.0003	19.47

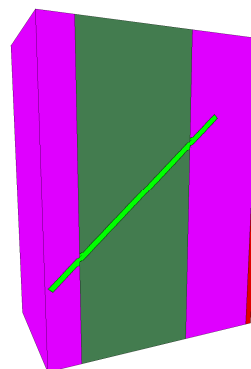
Validation reference buildings	Row House	School building
ΔU [W/m ² K]	0.0037	0.0053

*The criterion has been validated with two representative buildings a row house and a school building.

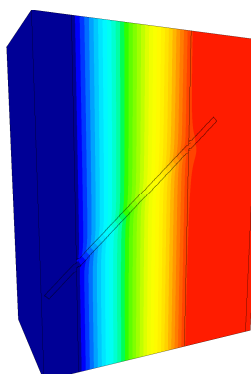
www.passivehouse.com



Isothermal map of the horizontal rod



Material map of the diagonal rod



Isothermal map of the diagonal rod



CERTIFIED COMPONENT

Passive House Institute