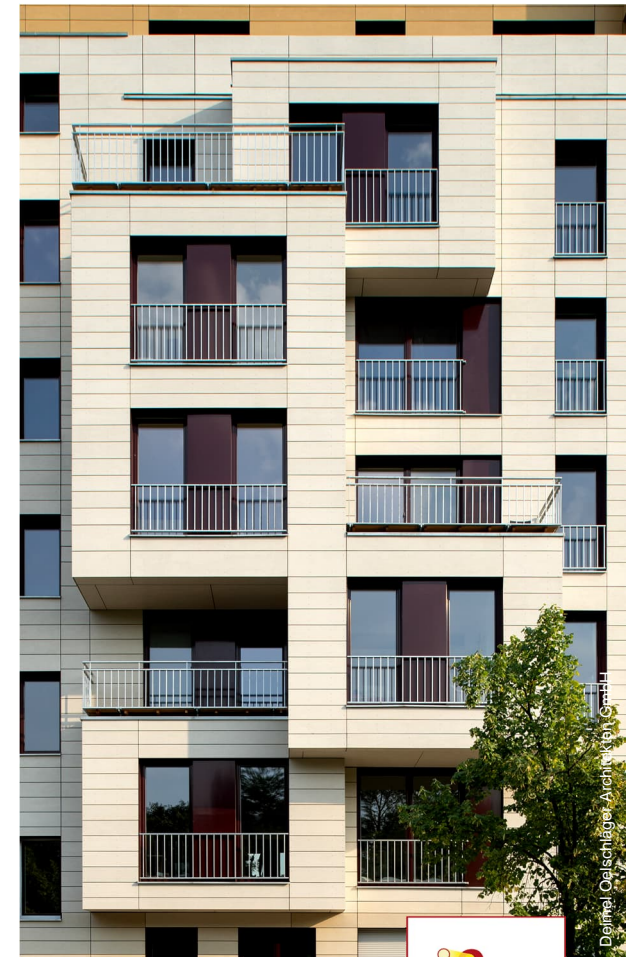


*"Passive House components are the key to realising development that is both economically viable and climate-friendly. Their reliability is guaranteed by independent certification - this promotes the availability and practicability of energy-efficient construction and refurbishment worldwide."*

*- Wolfgang Feist*

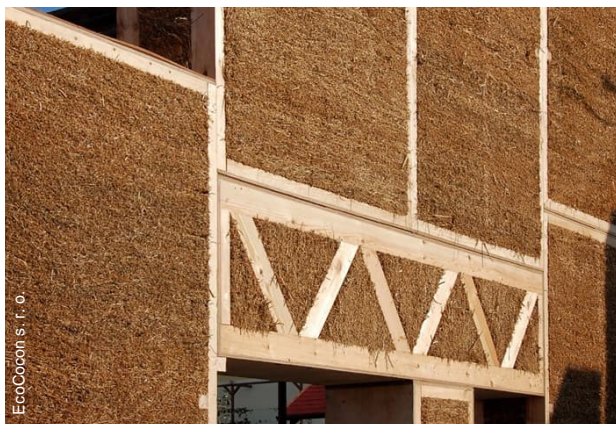


Passivhaus Institut GmbH  
Rheinstraße 44 / 46  
64283 Darmstadt  
GERMANY



# PASSIVE HOUSE COMPONENT CERTIFICATION

The world's most ambitious  
energy efficiency seal



Worldwide, the market for energy-efficient buildings is growing rapidly, driving demand for reliable, high-performance components. However, producers often make energy performance claims that fail in practice. The Passive House Institute certifies energy-efficient components to international standards, ensuring they meet strict criteria for energy performance, comfort, and hygiene under these categories:

- **Building services (HVAC)**
- **Transparent building envelope**
- **Opaque building envelope**

## Benefits for designers:

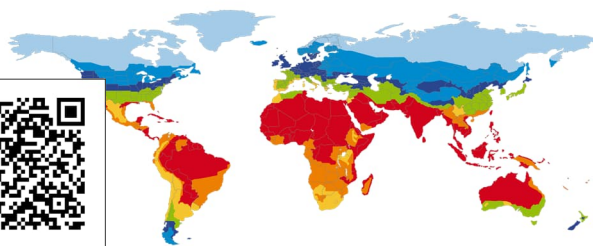
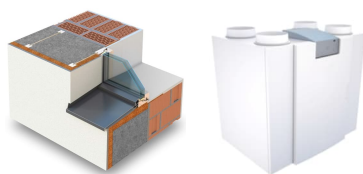
- **Design reliability:** Certified components are rigorously tested and examined by PHI's highly experienced engineers. This ensures building designers can trust the accuracy and consistency of key performance values, such as thermal efficiency, airtightness, and moisture control.
- **Streamlined compliance:** By using certified components, designers can significantly simplify the process of meeting the requirements of the Passive House standard. This reduces both the time and complexity involved in performing calculations, completing energy models, and obtaining certification.
- **Broad range of products:** There are well over 1000 certified Passive House components available, which are listed both on PHI's online Component Database, as well as for direct selection within the Passive House Planning Package energy balance modelling software tool.

## Benefits for manufacturers:

- **Market differentiation and trust:** The Passive House Institute's Certified Component seal serves as a trusted, internationally recognised mark of quality, helping manufacturers distinguish their products in a highly competitive market.
- **Increased visibility:** All PHI Certified Components are displayed on the online component database, together with their certified values. They are also listed within the Passive House Planning Package energy balance modelling tool, so they can be directly selected by designers during the project planning stage.
- **Streamlined integration and compliance:** By certifying their components, manufacturers provide designers, builders and developers with confidence that their products will integrate seamlessly into Passive House projects and meet the desired energy performance targets.

## Discover products for all global climate zones on our Component Database

[database.passivehouse.com](https://database.passivehouse.com)



## Get in touch with us

+49 (0) 6151 826 99-0  
components@passiv.de

