

# Certificate

## Certified Passive House Component

for cool, temperate climate, valid until 31.12.2026

Passive House Institute  
Dr. Wolfgang Feist  
64283 Darmstadt  
GERMANY

Category: **Roof parapet connection**  
Manufacturer: **Schöck Bauteile GmbH**  
**76534 Baden-Baden GERMANY**  
Product name: **Schöck Isokorb® XT Typ A**

The following criteria were used in  
awarding this certificate:

### Efficiency Criterion

The construction fulfils the requirement

$$\Psi \leq 0.010 \text{ W/(mK)}$$

### Comfort Criterion

The inner surface must be warm enough to prevent mould as  
well as uncomfortable down-draught and radiation losses.

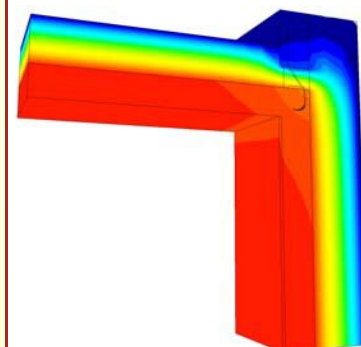
$$\theta_{i,min} \geq 17^\circ\text{C}$$

### Thermal data

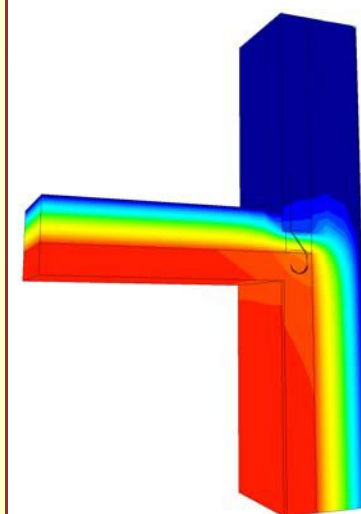
Typ	thermal bridge coefficient $\Psi$ [W/(mK)]	minimum inner surface temperature $\theta_{i,min}$ [°C]
XT Typ A-MM1-VV1-B150	-0.003	18.73
XT Typ A-MM1-VV1-B200	-0.001	18.72
XT Typ A-MM1-VV1-B250	0.004	18.69
XT Typ A-MM2-VV1-B150	0.002	18.64
XT Typ A-MM2-VV1-B200	0.004	18.64
XT Typ A-MM2-VV1-B250	0.009	18.62

The certificate includes types with minor statical performance.  
Thermal bridge coefficients can be approximated by linear  
interpolation. The stated  $\Psi$ -values are valid for an element dis-  
tance (axis-center distance) of 1,0 m. If larger distances are  
used,  $\Psi$  decreases.

[www.passivehouse.com](http://www.passivehouse.com)



Isothermal map of  
XT Typ A-MM1-  
VV1-B150



Isothermal map of  
XT Typ A-MM2-  
VV1-B150

cool, temperate climate



**CERTIFIED  
COMPONENT**

Passive House Institute