

Certificate

Certified Passive House component

for cool, temperate climate, valid until 31.12.2022

Category: **Facade anchor**
 Manufacturer: **EJOT Austria GmbH & Co KG**
Voitsberg, Österreich
 Product name: **CROSSFIX claw**

The following criteria were used in awarding this certificate:

Efficiency Criterion

In a typical application*, the construction fulfills the requirements of

$$\text{Eff. fa} \leq 0.200 \text{ W/(kNK)}$$

Comfort Criterion

The inner surface must be warm enough to prevent mold as well as uncomfortable down-drafts and radiation losses.

$$\theta_{i,\min} \geq 17^\circ\text{C}$$

Thermal data of the certified component

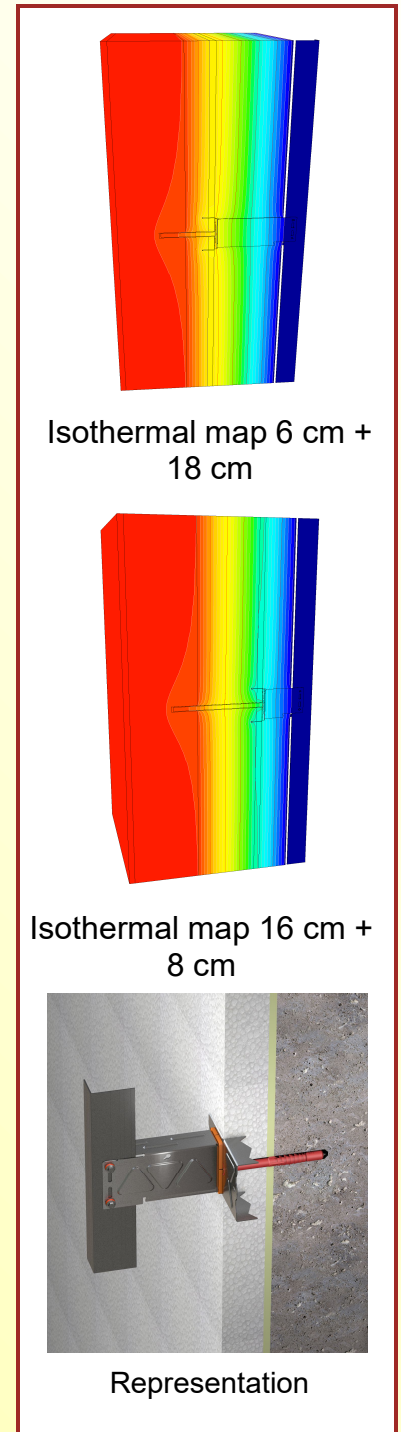
CROSSFIX claw	Thermal bridge coefficient	Minimum interior surface temperature
	χ [W/K]	$\theta_{i,\min}$ [°C]
FP 6cm + 18 cm	0.0063	19.26
SP 6cm + 18 cm	0.0063	19.26
FP 16cm + 8 cm	0.0056	19.26
SP 16cm + 8 cm	0.0056	19,26

The system is used for the renovation; the details relate to the insulation thickness of the existing insulation as well as that of the additionally newly applied insulation.

* The criterion has been validated with a representative facade of a school building

www.passivehouse.com

1751fa03



cool, temperate climate



CERTIFIED COMPONENT

Passive House Institute

Data sheet

EJOT Austria GmbH & Co KG, CROSSFIX claw

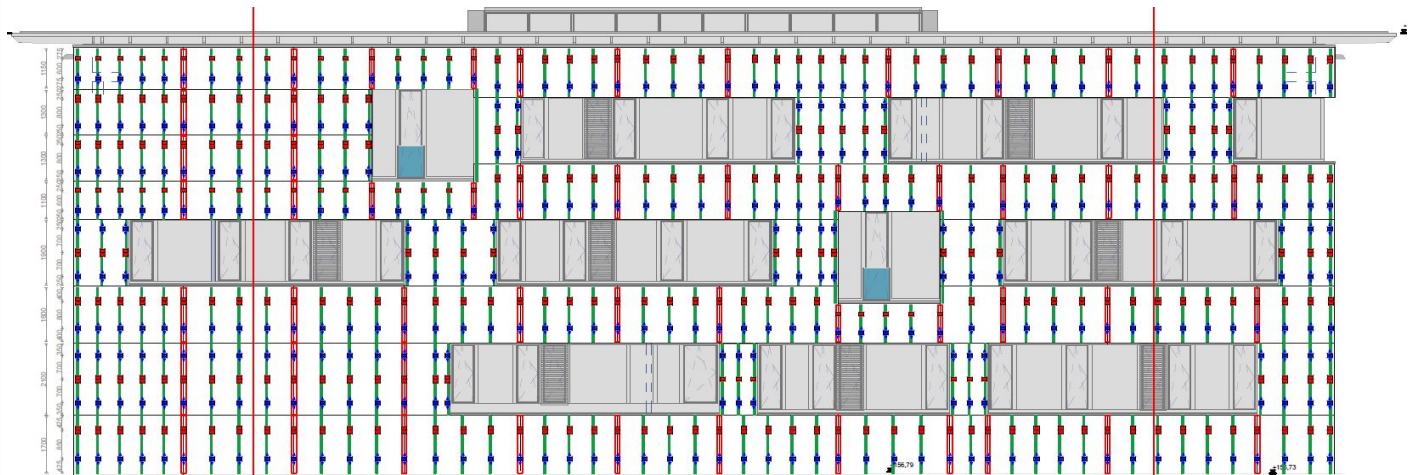


Manufacturer EJOT Austria GmbH & Co KG
 Grazer Vorstadt 146, 8570 Voitsberg, Österreich
 Tel.: +43 3142 27 600 76
<http://www.ejot.at/>

Criteria validated based on reference facade	Δ_U [W/m ² K]
LC III	0.0118
LC V	0.0163

In order to validate the suitability, the manufacturer provides a static calculation and an associated installation plan for the reference facade.

Loadclass / Facade-weight		Thermal bridge coefficient [W/K]		Quantity /m ²	[W/m ² K]	[W/(kNK)]
LC / Material	[kN/m ²]	X _{FP}	X _{SP}	FP/GP	ΔU	Eff. fa
5 (6+18 cm)	0,30	0,0063	0,0063	2,90	0,0183	0,0610
5 (16 + 8 cm)	0,30	0,0056	0,0056	2,90	0,0163	0,0545



Installation-plan reference facade of the certified component (LC V)

Load-class (LC)	Facade cladding	Facade weight [kN/m ²]	Efficiency criterion fulfilled?
I	Aluminium laminated	0.10	yes
II	Plastic	0.15	yes
III	Fiber-cement plates	0.20	yes
IV	Acrylic glass	0.25	yes
V	Ceramics	0.30	yes
VI	Stone	0.55	not evaluated

The classification criteria and the load class allocation can be found in the current criteria "Zertifizierte Passivhaus Komponente – Fassadenanker, Version 2.1, 27.05.2021".