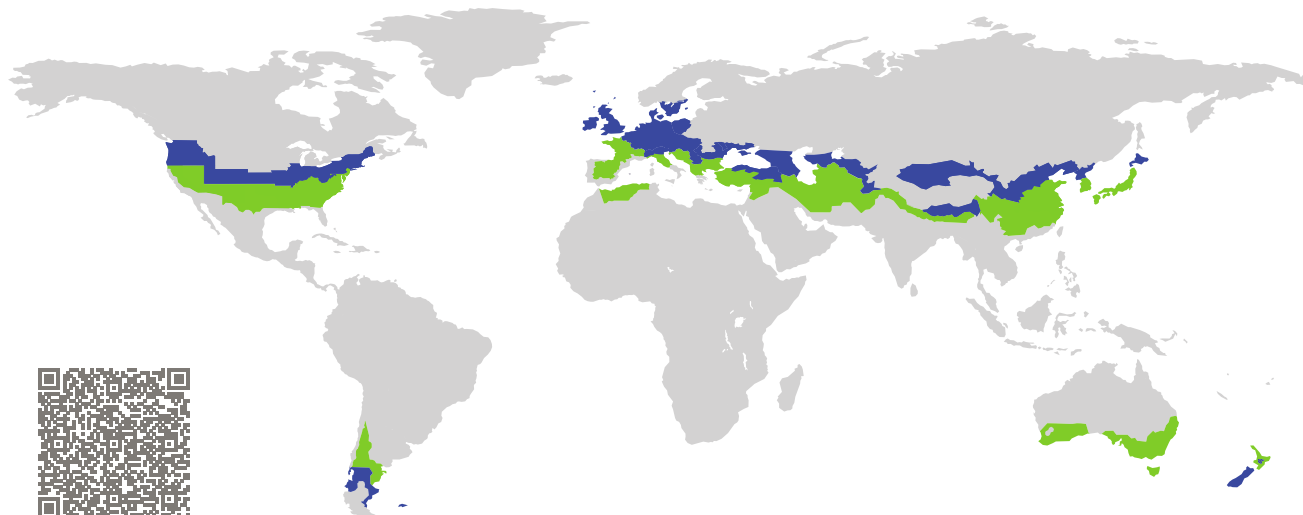


CERTIFICATE

Certified Passive House Component

Component-ID 1951cw03 valid until 31st December 2025

Passive House Institute
Dr. Wolfgang Feist
64283 Darmstadt
Germany

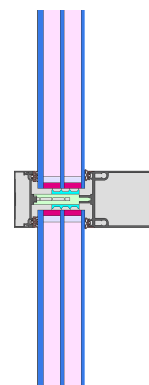


Category: **Curtain Wall**
Manufacturer: **Hydro Building Systems Germany GmbH, Ulm, Germany**
Product name: **WICONA WICTEC 60 NG**

This certificate was awarded based on the following criteria for the cool, temperate climate zone

Comfort $U_{CW=0.80} \leq 0.80 \text{ W}/(\text{m}^2 \text{ K})$
 $U_{CW,installed} \leq 0.85 \text{ W}/(\text{m}^2 \text{ K})$
with $U_g = 0.70 \text{ W}/(\text{m}^2 \text{ K})$

Hygiene $f_{Rsi=0.25} \geq 0.70$



cool, temperate climate



CERTIFIED COMPONENT

Passive House Institute

Passive House efficiency class

phE

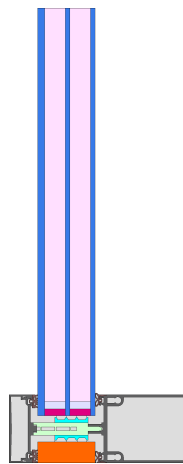
phD

phC

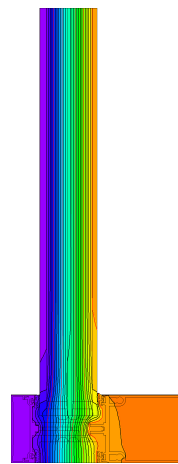
phB

phA

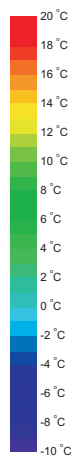
www.passivehouse.com



Calculation model



Isothermal



Description

Curtain wall facade with insulation inlay of XPET (0.029 W/(mK) and polyethylene foam (0.038 W/(mK)). Thermal bridge values of glass support and fastener determined via measurement (ift). Silicone secondary sealing. Pane thickness: 50 mm (6/18/4/18/4), rebate depth: 18,5 mm.

Explanation






The element U-values were calculated for the test element size of 1.20 m × 2.50 m with $U_g = 0.70 \text{ W}/(\text{m}^2 \text{ K})$. If a higher quality glazing is used, the element U-values will improve as follows:

Glazing	$U_g =$	0.70	0.64	0.58	0.54	W/(m ² K)
		↓	↓	↓	↓	
Element	U_{CW}	0.80	0.75	0.69	0.66	W/(m ² K)

Transparent building components are sorted into efficiency classes depending on the heat losses through the opaque part. The frame U-Values, frame widths, thermal bridges at the glazing edge and the glazing edge lengths are included in these heat losses. A more detailed report of the calculations performed in the context of certification is available from the manufacturer.

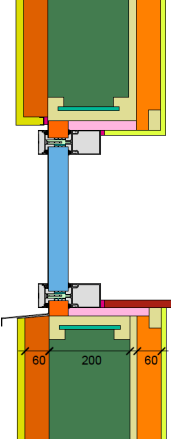
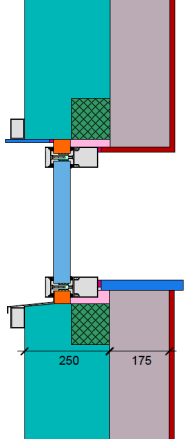
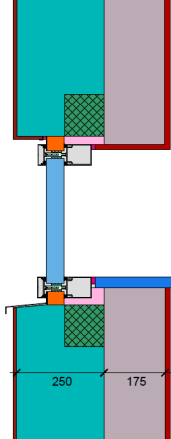
The Passive House Institute has defined international component criteria for seven climate zones. In principle, components that have been certified for climate zones with higher thermal requirements may also be used in climates with less stringent requirements. In a particular climate zone it may make sense to use a component of a higher thermal quality which has been certified for a climate zone with more stringent requirements.

Further information relating to certification can be found on www.passivehouse.com and passipedia.org.

Frame values		Frame width b_f mm	U -value frame U_f ¹ W/(m ² K)	Ψ -glazing edge Ψ_g W/(m K)	Temp. Factor $f_{Rsi=0.25}$ [-]
Mullion fixed	(OM1) 	60	0.81	0.038	0.78
Transom fixed	(OT1) 	60	0.81	0.040	0.80
Bottom fixed	(FB1) 	60	0.85	0.039	0.80
Top fixed	(FH1) 	60	0.85	0.039	0.80
Lateral fixed	(FJ1) 	60	0.85	0.039	0.78
Spacer: SWISSPACER ULTIMATE			Secondary seal: Silicone		

Thermal glass carrier bridge² $\chi_{GT} = 0.007$ W/K

Validated installations

Lightweight timber (fixed glazed)	Ventilated facade (fixed glazing)	Exterior insulation and finishing system (EIFS) (fixed glazed)
$U_{Wall} = 0.13$ W/(m ² K)	$U_{Wall} = 0.13$ W/(m ² K)	$U_{Wall} = 0.13$ W/(m ² K)
		
$\Psi_{install}$ W/(m K)	$\Psi_{install}$ W/(m K)	$\Psi_{install}$ W/(m K)
Top 0.043	Top 0.023	Top 0.022
Left 0.035	Left 0.019	Left 0.019
Right 0.035	Right 0.019	Right 0.019
Bottom 0.041	Bottom 0.021	Bottom 0.021
$U_{W,installed} = 0.85$ W/(m ² K)	$U_{W,installed} = 0.83$ W/(m ² K)	$U_{W,installed} = 0.83$ W/(m ² K)

¹ Includes $\Delta U = 0.16$ W/(m² K). Determined through measurement

² Determined through measurement. Glass carrier type: Aluminium

