

Certificate

Certified Passive House Component

for cool, temperate climate, valid until 31.12.2025

Passive House Institute
Dr. Wolfgang Feist
64283 Darmstadt
GERMANY

Category: **Balcony connection**
Slab thickness 160 - 240 mm
Manufacturer: **Leviat GmbH**
40764 Langenfeld, GERMANY
Product name: **HIT-SP ZVX**

The following criteria were used in
awarding this certificate:

Efficiency Criterion

In two typical applications*, the construction fulfills the
requirement of

$$\Delta U_{WB} \leq 0.010 \text{ W/(m}^2\text{K)}$$

Comfort Criterion

The inner surface must be warm enough to prevent mould as
well as uncomfortable down-draught and radiation losses.

$$\theta_{i,min} \geq 17^\circ\text{C}$$

Following heat transmission coefficients Ψ [W/(mK)]
have been determined:

Product	Slab thickness [mm]			
	160	180	220	240
HIT-SP ZVX-0202-hh ¹⁾ -100-30-06	0.096	0.096	0.104	0.104
HIT-SP ZVX-0202-hh ¹⁾ -100-30-08	0.099	0.101	0.105	-
HIT-SP ZVX-0302-hh ¹⁾ -100-30-06	0.098	0.102	0.106	-
HIT-SP ZVX-0502-hh ¹⁾ -100-30-06	0.102	0.107	-	-

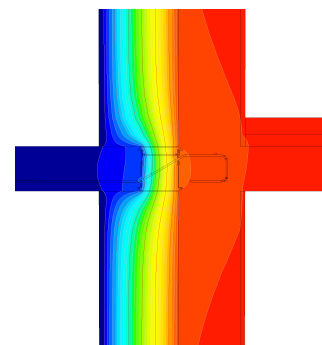
¹⁾ hh - slab thickness [cm]

* The criterion was validated on both, a row house and a
apartment dwelling.

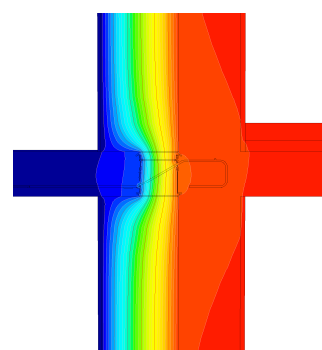
(according to criteria "balcony connection" v2.1.1)

The certificate includes types with minor statical performance.
Thermal bridge coefficients can be approximated by linear
interpolation.

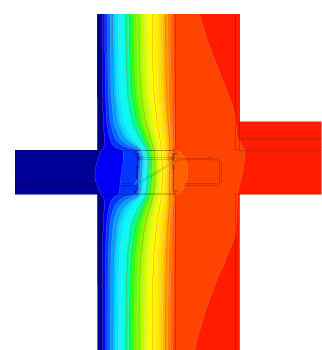
www.passivehouse.com



Isothermal map of the
HIT-SP ZVX-0202-16-
100-30-06



Isothermal map of the
HIT-SP ZVX-0302-16-
100-30-06



Isothermal map of the
HIT-SP ZVX-0502-16-
100-30-06



**CERTIFIED
COMPONENT**

Passive House Institute