


Certificate

valid until 31.12.2025

 **Passivhaus
Institut**
Dr. Wolfgang Feist
Rheinstraße 44/46
D-64283 Darmstadt

Balcony connection

Low Energy Component

HIT-SP ZVX
160 - 240 mm slab thickness

Manufacturer: Leviat GmbH
40764 Langenfeld, GERMANY

The following criteria were used in awarding this certificate:

Efficiency Criterion

In two typical applications¹⁾, the construction is

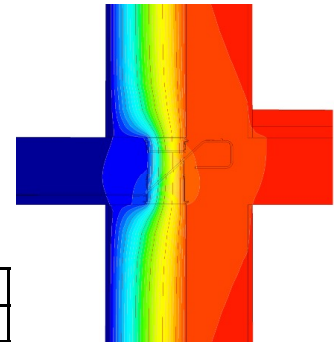
$$\Delta U_{WB} < 0.025 \text{ W/(m}^2\text{K)}$$

Comfort Criterion

The inner surface must be warm enough to prevent mould as well as uncomfortable down-draught and radiation losses.

$$\theta_{i,min} > 17.00 \text{ } ^\circ\text{C}$$

Following heat transmission coefficients (Ψ [W/(mK)])
have been validated:



Isothermal map of
HIT-SP ZVX-0502-24-100-
30-06

Product	Slab thickness [mm]			
	160	180	220	240
HIT-SP ZVX-0202-hh ¹⁾ -100-30-08	-	-	-	0.109
HIT-SP ZVX-0302-hh ¹⁾ -100-30-06	-	-	-	0.108
HIT-SP ZVX-0502-hh ¹⁾ -100-30-06	-	-	0.109	0.109

¹⁾ hh - slab thickness [cm]

²⁾ The criterion was validated on both, a row house and a apartment dwelling
(according to criteria "balcony connection" v2.1.1)

The certificate includes types with minor statical performance. The thermal bridge
coefficient can be approximated by linear interpolation

