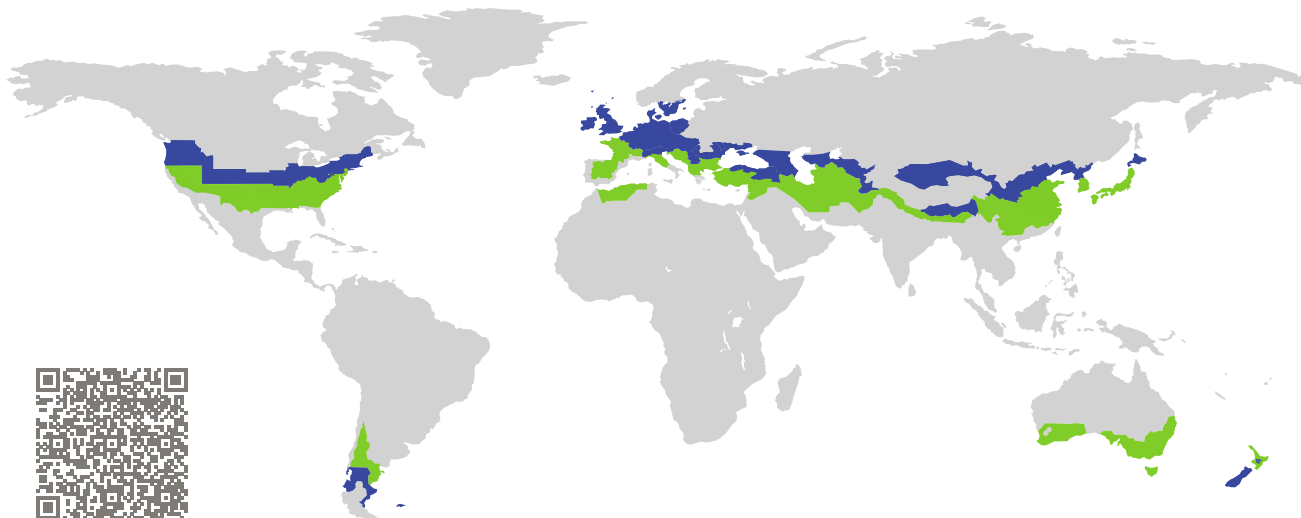


CERTIFICATE

Certified Passive House Component

Component-ID 2176cw03 valid until 31st December 2025

Passive House Institute
Dr. Wolfgang Feist
64283 Darmstadt
Germany

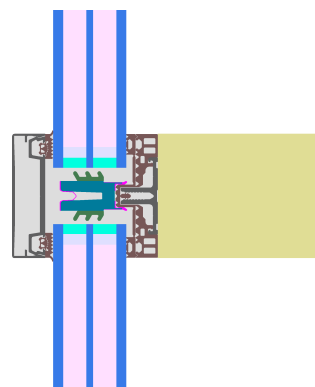


Category: **Curtain Wall**
Manufacturer: **SCHÜCO International KG,
Bielefeld,
Germany**
Product name: **AOC 75 TI**

**This certificate was awarded based on the following
criteria for the cool, temperate climate zone**

Comfort $U_{CW} = 0.79 \leq 0.80 \text{ W}/(\text{m}^2 \text{ K})$
 $U_{CW, \text{installed}} \leq 0.85 \text{ W}/(\text{m}^2 \text{ K})$
with $U_g = 0.70 \text{ W}/(\text{m}^2 \text{ K})$

Hygiene $f_{Rsi=0.25} \geq 0.70$



cool, temperate climate



**CERTIFIED
COMPONENT**

Passive House Institute

Passive House
efficiency class

phE

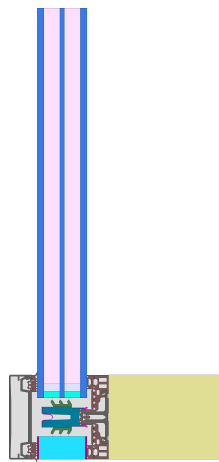
phD

phC

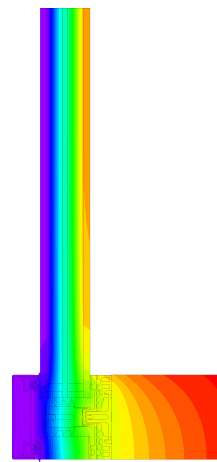
phB

phA

www.passivehouse.com



Calculation model



Isothermal

Description

wood curtain wall; reduction of radiation losses by way of blank aluminium pressure plate; insulator made from XPET, PE and PE-foam Pane thickness: 44 mm (6/14/4/14/6), rebate depth: 20,5 mm. Spacer: SWISSPACER Ultimate with butyl as secondary seal.

Explanation






The element U-values were calculated for the test element size of 1.20 m × 2.50 m with $U_g = 0.70 \text{ W}/(\text{m}^2 \text{ K})$. If a higher quality glazing is used, the element U-values will improve as follows:

Glazing	$U_g =$	0.70	0.68	0.56	0.52	$\text{W}/(\text{m}^2 \text{ K})$
		↓	↓	↓	↓	
Element	U_{CW}	0.79	0.78	0.67	0.63	$\text{W}/(\text{m}^2 \text{ K})$

Transparent building components are sorted into efficiency classes depending on the heat losses through the opaque part. The frame U-Values, frame widths, thermal bridges at the glazing edge and the glazing edge lengths are included in these heat losses. A more detailed report of the calculations performed in the context of certification is available from the manufacturer.

The Passive House Institute has defined international component criteria for seven climate zones. In principle, components that have been certified for climate zones with higher thermal requirements may also be used in climates with less stringent requirements. In a particular climate zone it may make sense to use a component of a higher thermal quality which has been certified for a climate zone with more stringent requirements.

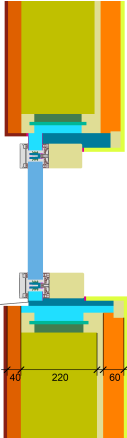
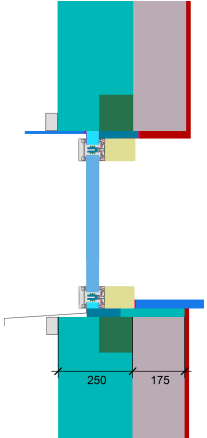
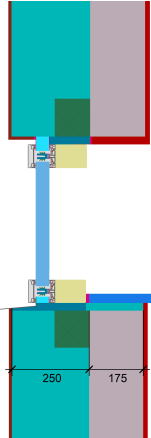
Further information relating to certification can be found on www.passivehouse.com and passipedia.org.

Frame values		Frame width b_f mm	U -value frame U_f ¹ W/(m ² K)	Ψ -glazing edge Ψ_g W/(m K)	Temp. Factor $f_{Rsi=0.25}$ [-]
Mullion fixed	(OM1) 	75	0.84	0.034	0.73
Transom fixed	(OT1) 	75	0.84	0.033	0.73
Bottom fixed	(FB1) 	75	0.77	0.032	0.71
Top fixed	(FH1) 	75	0.77	0.032	0.71
Lateral fixed	(FJ1) 	75	0.77	0.032	0.71

Spacer: SWISSPACER ULTIMATE Secondary seal: Butyl

Thermal glass carrier bridge² $\chi_{GT} = 0.004$ W/K

Validated installations

Lightweight timber (fixed glazed)		Ventilated facade (fixed glazing)		Exterior insulation and finishing system (EIFS) (fixed glazed)	
$U_{Wall} = 0.13$ W/(m ² K)		$U_{Wall} = 0.13$ W/(m ² K)		$U_{Wall} = 0.13$ W/(m ² K)	
					
$\Psi_{install}$	W/(m K)	$\Psi_{install}$	W/(m K)	$\Psi_{install}$	W/(m K)
Top	0.023	Top	0.016	Top	0.015
Left	0.021	Left	0.011	Left	0.015
Right	0.021	Right	0.011	Right	0.015
Bottom	0.020	Bottom	0.017	Bottom	0.013
$U_{W,installed} = 0.82$ W/(m ² K)		$U_{W,installed} = 0.81$ W/(m ² K)		$U_{W,installed} = 0.81$ W/(m ² K)	

¹ Includes $\Delta U = 0.18$ W/(m² K). Determined through measurement

² Standard value. Glass carrier type: Non-metallic

