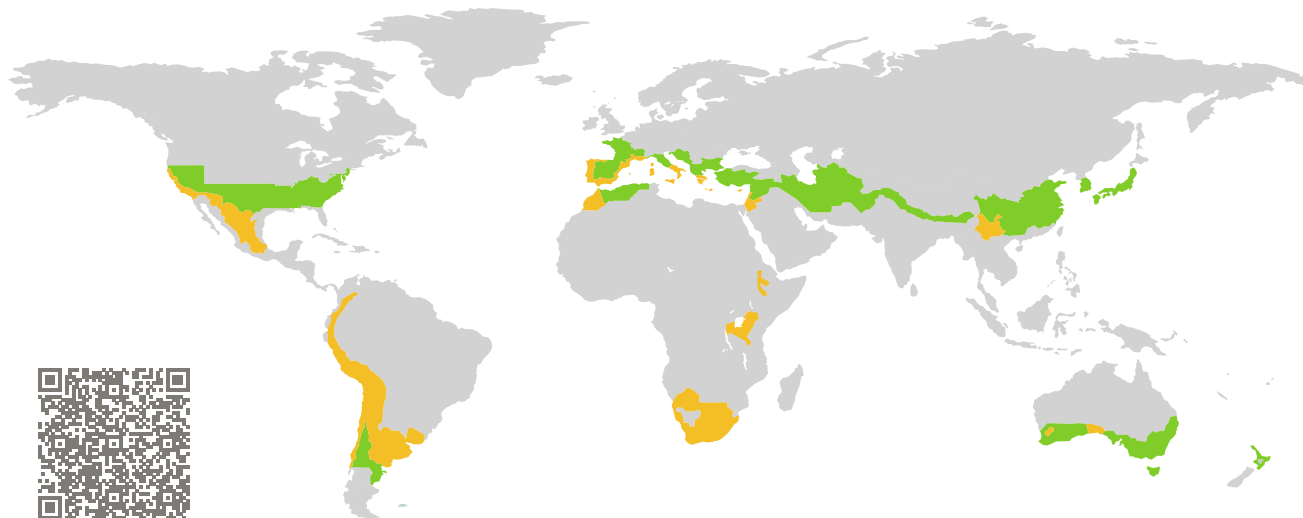


# CERTIFICATE

Certified Passive House Component

Component-ID 2324wi04 valid until 31st December 2025

Passive House Institute  
Dr. Wolfgang Feist  
64283 Darmstadt  
Germany

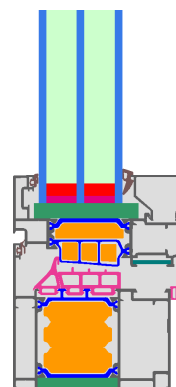


Category: **Window Frame**  
Manufacturer: **EXTRUIDOS DEL ALUMINIO, S.A.,  
Albacete,  
Spain**  
Product name: **E-85 PASSIVHAUS**

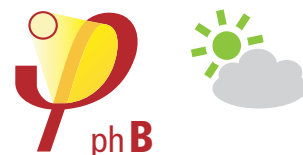
**This certificate was awarded based on the following  
criteria for the warm, temperate climate zone**

Comfort  $U_W = 1.00 \leq 1.00 \text{ W}/(\text{m}^2 \text{ K})$   
 $U_{W, \text{installed}} \leq 1.05 \text{ W}/(\text{m}^2 \text{ K})$   
with  $U_g = 0.90 \text{ W}/(\text{m}^2 \text{ K})$

Hygiene  $f_{Rsi=0.25} \geq 0.65$



warm, temperate climate



**CERTIFIED  
COMPONENT**

Passive House Institute

Passive House  
efficiency class

phE

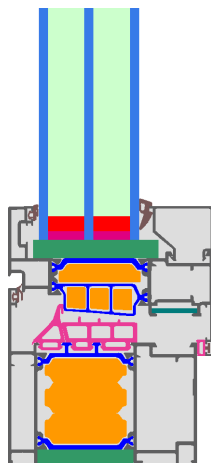
phD

phC

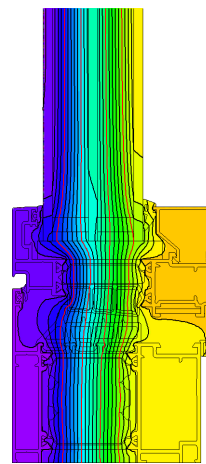
phB

phA

[www.passivehouse.com](http://www.passivehouse.com)



Calculation model



Isothermal

### Description

Aluminium frame with thermal separation (low lambda PA 0.21 W/(mK)) and insulation (PIR foam 0.025 W/(mK)). Spacer: Technoform-Spacer SP16, with silicone as a secondary seal. Pane thickness: 44 mm (4/16/4/16/4), rebate depth: 15 mm.

### Explanation

The window U-values were calculated for the test window size of 1.23 m × 1.48 m with  $U_g = 0.90$  W/(m<sup>2</sup> K). If a higher quality glazing is used, the window U-values will improve as follows:

Glazing	$U_g =$	0.90	0.70	0.64	0.58	W/(m <sup>2</sup> K)
		↓	↓	↓	↓	
Window	$U_W =$	1.00	0.86	0.82	0.78	W/(m <sup>2</sup> K)

Transparent building components are classified into efficiency classes depending on the heat losses through the opaque part. The frame U-Values, frame widths, thermal bridges at the glazing edge, and the glazing edge lengths are included in these heat losses. A more detailed report of the calculations performed in the context of certification is available from the manufacturer.

The Passive House Institute has defined international component criteria for seven climate zones. In principle, components which have been certified for climate zones with higher requirements may also be used in climates with less stringent requirements. In a particular climate zone it may make sense to use a component of a higher thermal quality which has been certified for a climate zone with more stringent requirements.

Further information relating to certification can be found on [www.passivehouse.com](http://www.passivehouse.com) and [passipedia.org](http://passipedia.org).

## Validated installations

Ventilated facade (operable)		Exterior insulation and finishing system (EIFS) (operable)		Cavity wall (operable)	
$U_{Wall} = 0.23 \text{ W/(m}^2 \text{ K)}$		$U_{Wall} = 0.23 \text{ W/(m}^2 \text{ K)}$		$U_{Wall} = 0.22 \text{ W/(m}^2 \text{ K)}$	
$\Psi_{install}$	W/(m K)	$\Psi_{install}$	W/(m K)	$\Psi_{install}$	W/(m K)
Top	0.015	Top	0.013	Top	0.015
Side	0.015	Side	0.013	Side	0.015
Bottom	0.022	Bottom	0.020	Bottom	0.022
$U_{W,installed} = 1.05 \text{ W/(m}^2 \text{ K)}$		$U_{W,installed} = 1.05 \text{ W/(m}^2 \text{ K)}$		$U_{W,installed} = 1.05 \text{ W/(m}^2 \text{ K)}$	

Frame values			Frame width $b_f$ mm	$U$ -value frame $U_f$ W/(m <sup>2</sup> K)	$\Psi$ -glazing edge $\Psi_g$ W/(m K)	Temp. Factor $f_{Rsi=0.25}$ [-]
Mullion 1 casement	(1M1)		144	1.10	0.029	0.73
Bottom	(OB1)		113	0.99	0.030	0.74
Top	(OH1)		113	0.99	0.030	0.74
Lateral	(OJ1)		113	0.99	0.030	0.74
Spacer: Technoform-Spacer SP16			Secondary seal: Silicone			

