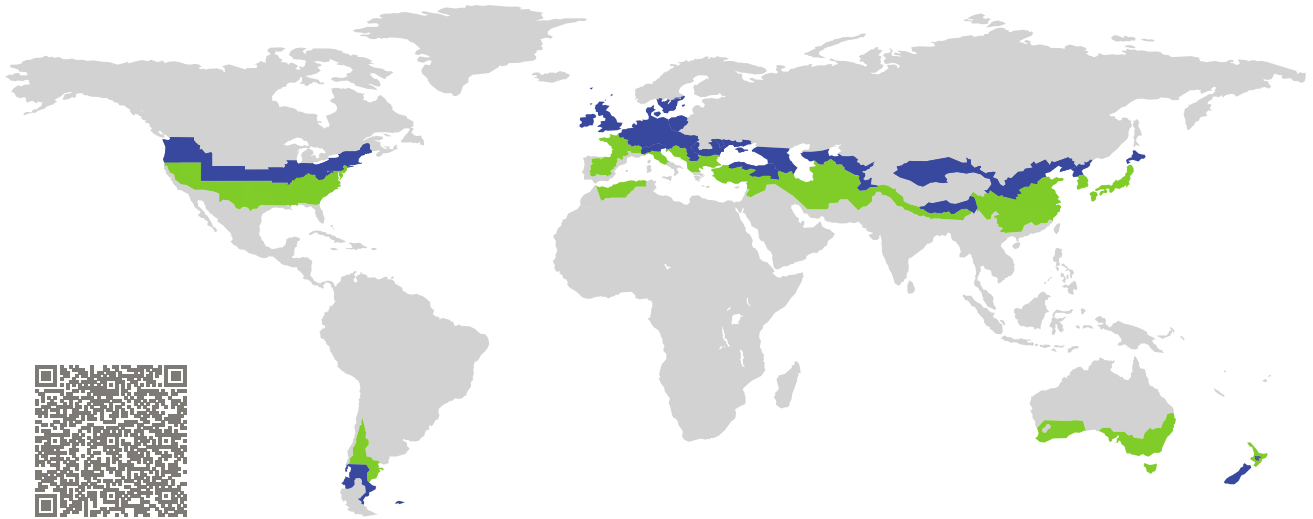


证书

被动房已认证组件

组件认证编码 2047wi03 有效至 31st December 2025

Passive House Institute
Dr. Wolfgang Feist
64283 Darmstadt
Germany

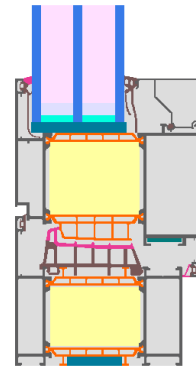


类别: 窗框
制造商: **Shandong Fmien Door and Window System Technology Co.,Ltd., Weifang, China**
产品名称: **BD93**

此证书根据以下规格颁发, 适用于凉温气候带 (**cool temperate**)

舒适度 $U_W = 0.80 \leq 0.80 \text{ W}/(\text{m}^2 \text{ K})$
 $U_{W, \text{installed}} \leq 0.85 \text{ W}/(\text{m}^2 \text{ K})$
with $U_g = 0.70 \text{ W}/(\text{m}^2 \text{ K})$

卫生标准 $f_{Rsi=0.25} \geq 0.70$



被动房
节能等级

phE

phD

phC

phB

phA

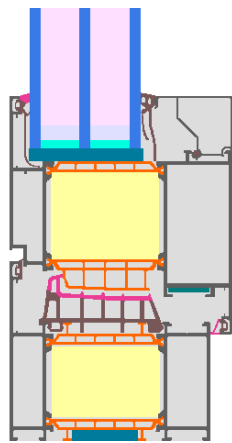
www.passivehouse.com

cool, temperate climate

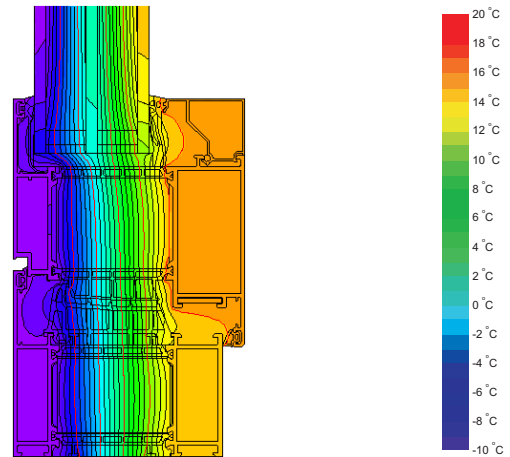


**CERTIFIED
COMPONENT**

Passive House Institute



计算模型



等温线图

认证产品描述

铝合金框隔热条是低导热系数的尼龙66: $\lambda = 0.21 \text{ W/(mK)}$; 填充发泡酚醛树脂: $\lambda = 0.022 \text{ W/(mK)}$.
 Glasstärke: 51 mm (5/18/5/18/5), Glaseinstand: 24 mm. Abstandhalter: Technoform-Spacer SP16 mit PU Sekundrdichtung.

说明

整窗U值是基于参照尺寸 $1.23 \text{ m} \times 1.48 \text{ m}$ with $U_g = 0.70 \text{ W/(m}^2 \text{ K)}$. 若使用更高品质的节能玻璃, 整窗U值可提升如下:

玻璃	$U_g =$	0.70	0.64	0.58	0.52	W/(m ² K)
		↓	↓	↓	↓	
整窗	$U_W =$	0.80	0.77	0.73	0.70	W/(m ² K)

建筑透明组件通过非透明部份的传热损失进行节能分级。整窗传热损失包括由窗框U值和窗框宽度, 暖边热桥和暖边长度引起的热损失。详细计算可从制造商获取。

被动房研究所将国际组件认证标准划分为七种气候类型。原则上, 满足更高节能要求的认证组件也可用于节能要求较低的气候区。在特定气候区中, 使用具有高节能要求的认证组件会更具有意义。

更多认证信息: www.passivehouse.com and passipedia.org.

安装节点

砌块系统 (开启扇)		Ventilated facade		外保温及饰面系统(EIFS) (开启扇)	
$U_{\text{墙}} = 0.15 \text{ W}/(\text{m}^2 \text{ K})$		$U_{\text{墙}} = 0.13 \text{ W}/(\text{m}^2 \text{ K})$		$U_{\text{墙}} = 0.13 \text{ W}/(\text{m}^2 \text{ K})$	
<p>Exterior plaster 1.0 W/(mK) EPS 0.035 W/(mK) Concrete 2.3 W/(mK) EPS 0.035 W/(mK) Interior plaster 0.57 W/(mK)</p>		<p>Ventilated facade – substructure Mineral wool 0.035 W/(mK) Concrete 2.3 W/(mK) Interior plaster 0.57 W/(mK)</p>		<p>Exterior plaster 1.0 W/(mK) EPS 0.035 W/(mK) Adhesive 0.70 W/(mK) Sand-lime brick 1.0 W/(mK) Interior plaster 0.57 W/(mK)</p>	
<p>Insulation 0.040 W/(mK)</p>		<p>Suitable fastening, e.g. mounting frame or bracket, but only protruding as far as necessary for fixing the window</p>		<p>Suitable fastening, e.g. mounting frame or bracket, but only protruding as far as necessary for fixing the window</p>	
$\Psi_{\text{安装}}$	W/(m K)	$\Psi_{\text{安装}}$	W/(m K)	$\Psi_{\text{安装}}$	W/(m K)
上口	0.014	上口	0.012	上口	0.014
侧边	0.014	侧边	0.012	侧边	0.014
下口	0.022	下口	0.028	下口	0.028
$U_{W, \text{已安装}} = 0.85 \text{ W}/(\text{m}^2 \text{ K})$		$U_{W, \text{已安装}} = 0.85 \text{ W}/(\text{m}^2 \text{ K})$		$U_{W, \text{已安装}} = 0.85 \text{ W}/(\text{m}^2 \text{ K})$	

窗框参数	宽度 b_f mm	U -值 U_f W/(m ² K)	暖边热桥- Ψ -值 Ψ_g W/(m K)	温度系数 (卫生标准) $f_{Rsi=0.25}$ [-]
立柱 (FM1)	187	0.79	0.023	0.77
下横框 (OB1)	159	0.82	0.024	0.78
上横框 (OH1)	159	0.82	0.024	0.78
侧面 (OJ1)	159	0.82	0.024	0.78
暖边间隔条: Technoform-Spacer SP16		双层密封胶: Butyl		

