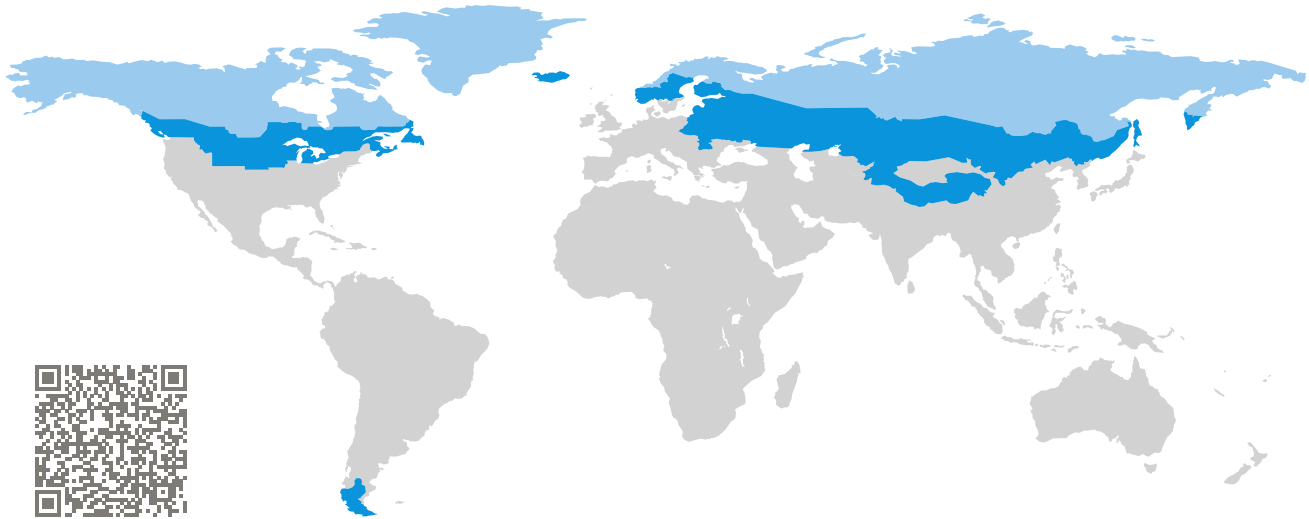


CERTIFICATE

Certified Passive House Component

Component-ID 1428wc01 valid until 31st December 2025

Passive House Institute
Dr. Wolfgang Feist
64283 Darmstadt
Germany

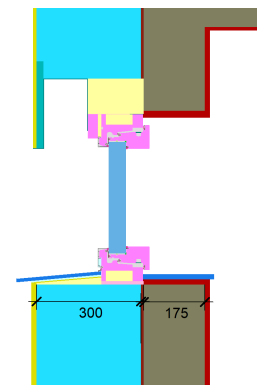


Category: **Window connection**
Manufacturer: **ENERsign GmbH,
Wittlich,
Germany**
Product name: **ENERsign arctis**

**This certificate was awarded based on the following
criteria for the arctic climate zone**

Comfort $U_{W,installed} \leq 0.45 \text{ W}/(\text{m}^2 \text{ K})$
with $U_g = 0.35 \text{ W}/(\text{m}^2 \text{ K})$

Hygiene $f_{Rsi=0.25} \geq 0.80$



Passive House
efficiency class

phE

phD

phC

phB

phA

phA+

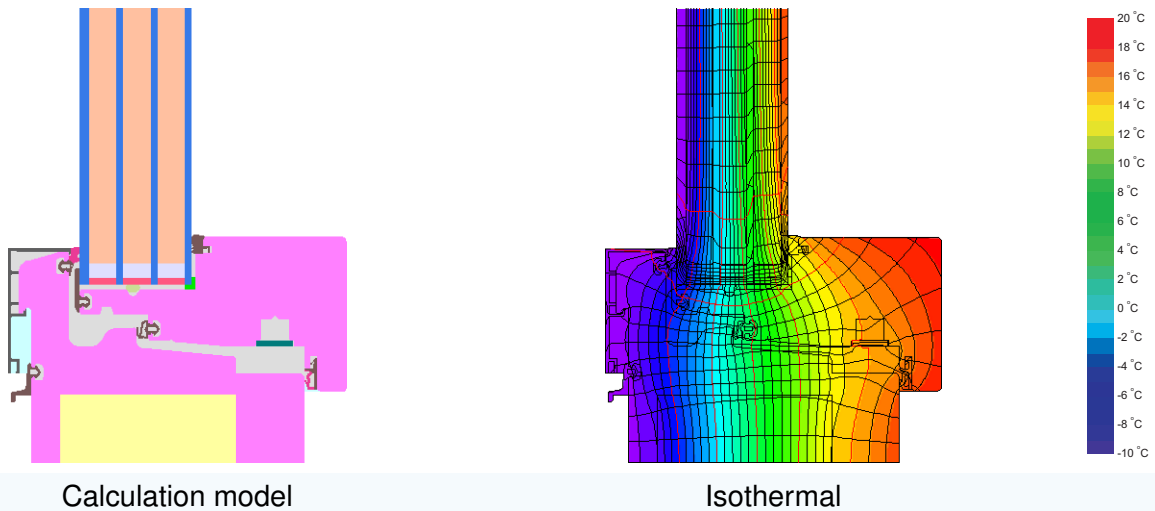
www.passivehouse.com

arctic climate



**CERTIFIED
COMPONENT**

Passive House Institute



Description

PVC-foam (0.060 W/(mK)) frame with aluminium cladding, insulated by resolic foam (0.023 W/(mK)). Pane thickness: 49 mm (4/12/3/12/3/12/3), rebate depth: 21 mm. Spacer: MULTITECH G with DOWSIL™ 3364 Warm Edge Sealant secondary seal.

Explanation

The window U-values were calculated for the test window size of 1.23 m × 1.48 m with $U_g = 0.35 \text{ W}/(\text{m}^2 \text{ K})$. If a higher quality glazing is used, the window U-values will improve as follows:

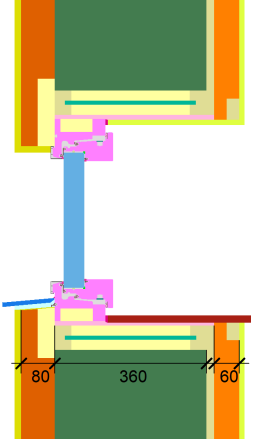
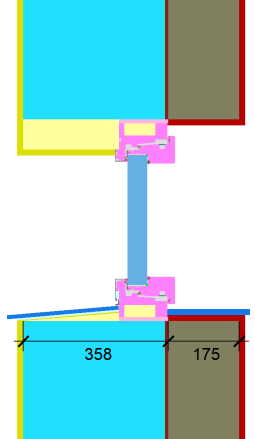
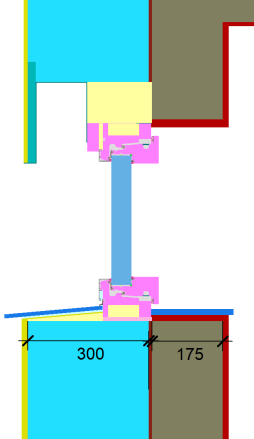
Glazing	$U_g =$	0.35	0.52	0.40	0.30	W/(m ² K)
		↓	↓	↓	↓	
Window	$U_W =$	0.42	0.54	0.45	0.38	W/(m ² K)





Transparent building components are classified into efficiency classes depending on the heat losses through the opaque part. The frame U-Values, frame widths, thermal bridges at the glazing edge, and the glazing edge lengths are included in these heat losses. A more detailed report of the calculations performed in the context of certification is available from the manufacturer.

The Passive House Institute has defined international component criteria for seven climate zones. In principle, components which have been certified for climate zones with higher requirements may also be used in climates with less stringent requirements. In a particular climate zone it may make sense to use a component of a higher thermal quality which has been certified for a climate zone with more stringent requirements.

Further information relating to certification can be found on www.passivehouse.com and passipedia.org.

Validated installations

Lightweight timber (operable)	Exterior insulation and finishing system (EIFS) (operable)	Exterior insulation and finishing system (EIFS) (operable) 2
$U_{Wall} = 0.09 \text{ W}/(\text{m}^2 \text{ K})$	$U_{Wall} = 0.08 \text{ W}/(\text{m}^2 \text{ K})$	$U_{Wall} = 0.09 \text{ W}/(\text{m}^2 \text{ K})$
		
$\Psi_{install}$ W/(m K)	$\Psi_{install}$ W/(m K)	$\Psi_{install}$ W/(m K)
Top 0.012	Top 0.004	Top 0.013
Side 0.012	Side 0.004	Side 0.002
Bottom 0.015	Bottom 0.015	Bottom 0.013
$U_{W,installed} = 0.45 \text{ W}/(\text{m}^2 \text{ K})$	$U_{W,installed} = 0.44 \text{ W}/(\text{m}^2 \text{ K})$	$U_{W,installed} = 0.44 \text{ W}/(\text{m}^2 \text{ K})$

Frame values	Frame width b_f mm	U -value frame U_f W/(m ² K)	ψ -glazing edge Ψ_g W/(m K)	Temp. Factor $f_{Rsi=0.25}$ [-]
Mullion 2 casements (2M1) 	145	0.53	0.016	0.80
Bottom (OB1) 	100	0.47	0.016	0.80
Top (OH1) 	100	0.44	0.016	0.80
Lateral (OJ1) 	100	0.44	0.016	0.80
Spacer: MULTITECH G		Secondary seal: DOWSIL™ 3364 Warm Edge IG Sealant		

