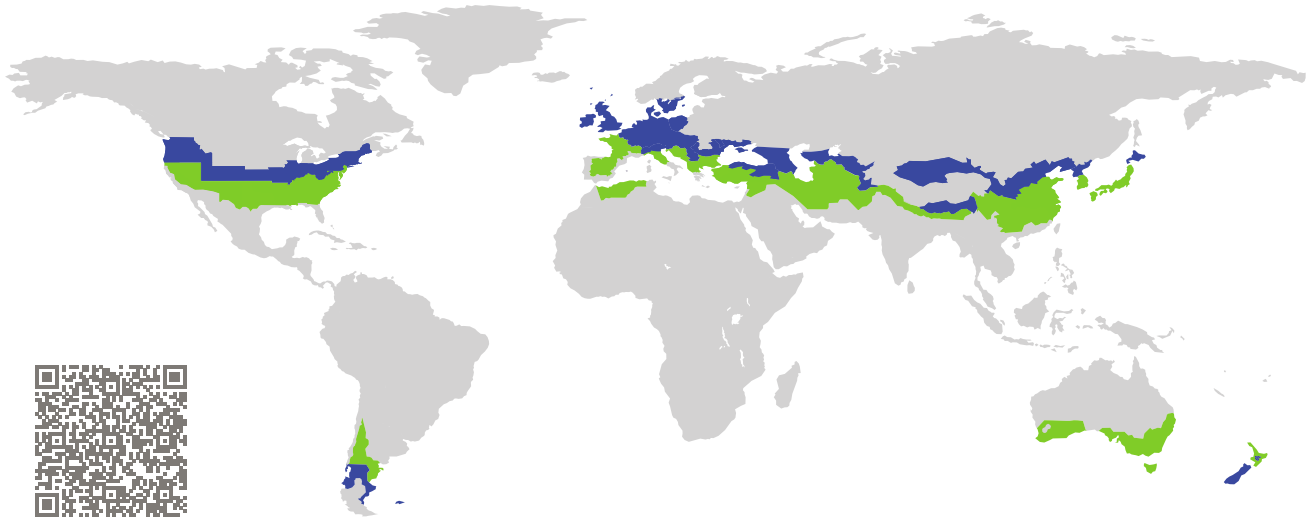


证书

被动房已认证组件

组件认证编码 1805wi03 有效至 31st December 2025

Passive House Institute
Dr. Wolfgang Feist
64283 Darmstadt
Germany

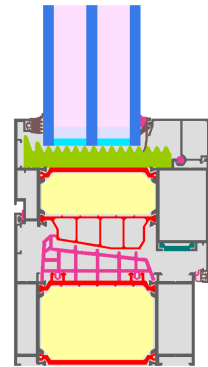


类别: 窗框
制造商: 山东南山铝业股份有限公司
**Shandong Nanshan Aluminium Co., Ltd.,
Shandong/Longkou,
China**
产品名称: **SPT100**

此证书根据以下规格颁发, 适用于凉温气候带 (**cool temperate**)

舒适度 $U_W = 0.80 \leq 0.80 \text{ W}/(\text{m}^2 \text{ K})$
 $U_{W, \text{installed}} \leq 0.85 \text{ W}/(\text{m}^2 \text{ K})$
with $U_g = 0.70 \text{ W}/(\text{m}^2 \text{ K})$

卫生标准 $f_{Rsi=0.25} \geq 0.70$



被动房
节能等级

phE

phD

phC

phB

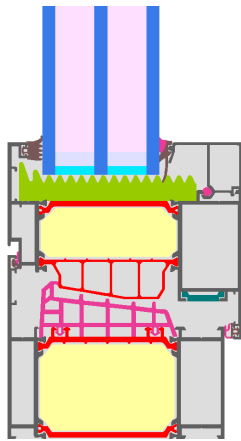
phA

cool, temperate climate

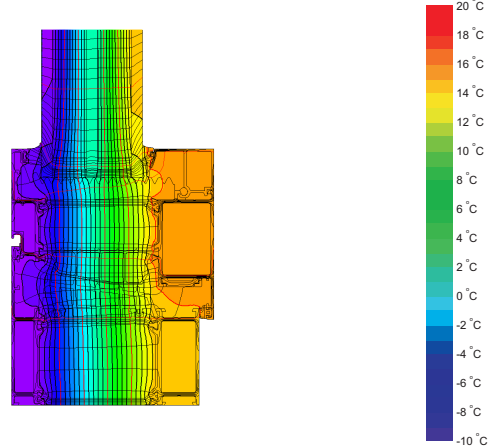


**CERTIFIED
COMPONENT**

Passive House Institute



计算模型



等温线图

认证产品描述

铝木框保温隔热(聚胺 0.30 W/(m)和 隔热(酚醛保温 Kooltherm 0.022 W/(mK)); 窗厚:54 mm (6/18/6/18/6), 槽口为: 15 mm. 间隔条: TECATHERM Low Psi, Polyurethane

说明

整窗U值是基于参照尺寸 1.23 m × 1.48 m with $U_g = 0.70 \text{ W}/(\text{m}^2 \text{ K})$. 若使用更高品质的节能玻璃, 整窗U值可提升如下:

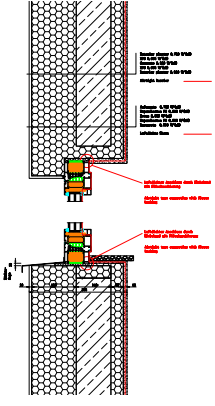
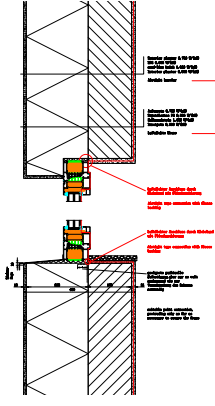
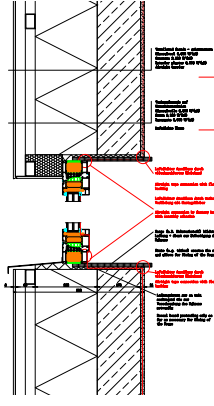
玻璃	$U_g =$	0.70	0.64	0.58	0.54	W/(m ² K)
		↓	↓	↓	↓	
整窗	$U_w =$	0.80	0.77	0.73	0.70	W/(m ² K)





建筑透明组件通过非透明部份的传热损失进行节能分级。整窗传热损失包括由窗框U值和窗框宽度, 暖边热桥和暖边长度引起的热损失。详细计算可从制造商获取。

被动房研究所将国际组件认证标准划分为七种气候类型。原则上, 满足更高节能要求的认证组件也可用于节能要求较低的气候区。在特定气候区中, 使用具有高节能要求的认证组件会更具有意义。

更多认证信息: www.passivehouse.com and passipedia.org.

安装节点

砌块系统 (开启扇)	Exterior insulation and finishing system	Ventilated facade
$U_{\text{墙}} = 0.15 \text{ W}/(\text{m}^2 \text{ K})$	$U_{\text{墙}} = 0.13 \text{ W}/(\text{m}^2 \text{ K})$	$U_{\text{墙}} = 0.13 \text{ W}/(\text{m}^2 \text{ K})$
		
$\Psi_{\text{安装}} \text{ W}/(\text{m K})$	$\Psi_{\text{安装}} \text{ W}/(\text{m K})$	$\Psi_{\text{安装}} \text{ W}/(\text{m K})$
上口 0.015	上口 0.014	上口 0.014
侧边 0.015	侧边 0.014	侧边 0.014
下口 0.020	下口 0.019	下口 0.020
$U_{W, \text{已安装}} = 0.85 \text{ W}/(\text{m}^2 \text{ K})$	$U_{W, \text{已安装}} = 0.85 \text{ W}/(\text{m}^2 \text{ K})$	$U_{W, \text{已安装}} = 0.85 \text{ W}/(\text{m}^2 \text{ K})$

窗框参数	宽度 b_f mm	U -值 U_f $\text{W}/(\text{m}^2 \text{ K})$	暖边热桥- Ψ -值 Ψ_g $\text{W}/(\text{m K})$	温度系数 (卫生标准) $f_{Rsi=0.25}$ [-]
立柱 (FM1) 	148	0.86	0.026	0.77
下横框 (OB1) 	137	0.81	0.027	0.78
上横框 (OH1) 	137	0.81	0.027	0.78
侧面 (OJ1) 	137	0.81	0.027	0.78
暖边间隔条: TECATHERM Low Psi		双层密封胶: Polyurethan		

