

Certificate

Certified Passive House component

for cool, temperate climate, valid until 31.12.2025

Category: **Facade anchor**
 Manufacturer: **Leviat GmbH**
40764 Langenfeld, GERMANY
 Product name: **HK5**
Brickwork support bracket

The following criteria were used in awarding this certificate:

Efficiency Criterion

In a typical application*, the construction fulfills the requirements of

$$Eff_{fa} \leq 0.200 \text{ W/(kNK)}$$

Comfort Criterion

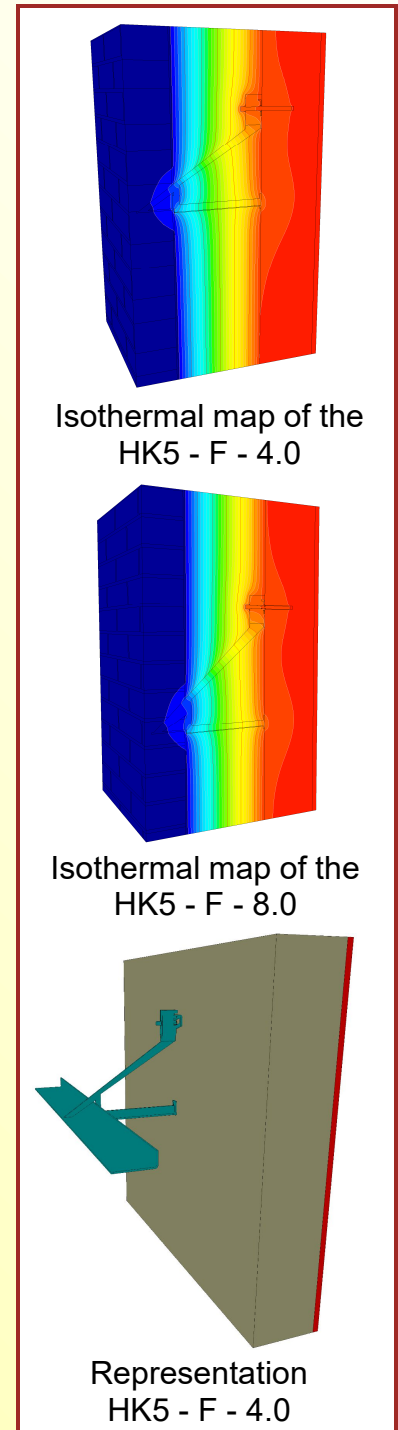
The inner surface must be warm enough to prevent mould as well as uncomfortable down-drought and radiation losses.

$$\theta_{i,min} \geq 17^{\circ}\text{C}$$

Thermal data of the certified component

HK 5 Brickwork support bracket	Thermal bridge coefficient χ [W/K]	Minimum interior surface temperature $\theta_{i,min}$ [°C]
HK5-U-4,0	0.0147	19.34
HK5-U-8,0	0.0154	19.34
HK5-U-12,0	0.0160	19.34
HK5-F-4,0	0.0147	19.34
HK5-F-8,0	0.0154	19.34
HK5-F-12,0	0.0160	19.34
Cavity-wall-tie	0.0007	19.47

* The criterion has been validated with a representative facade of a school building



Isothermal map of the
HK5 - F - 4.0

Isothermal map of the
HK5 - F - 8.0

Representation
HK5 - F - 4.0

cool, temperate climate



**CERTIFIED
COMPONENT**

Passive House Institute

Data sheet Leviat GmbH, HK5 brickwork support bracket

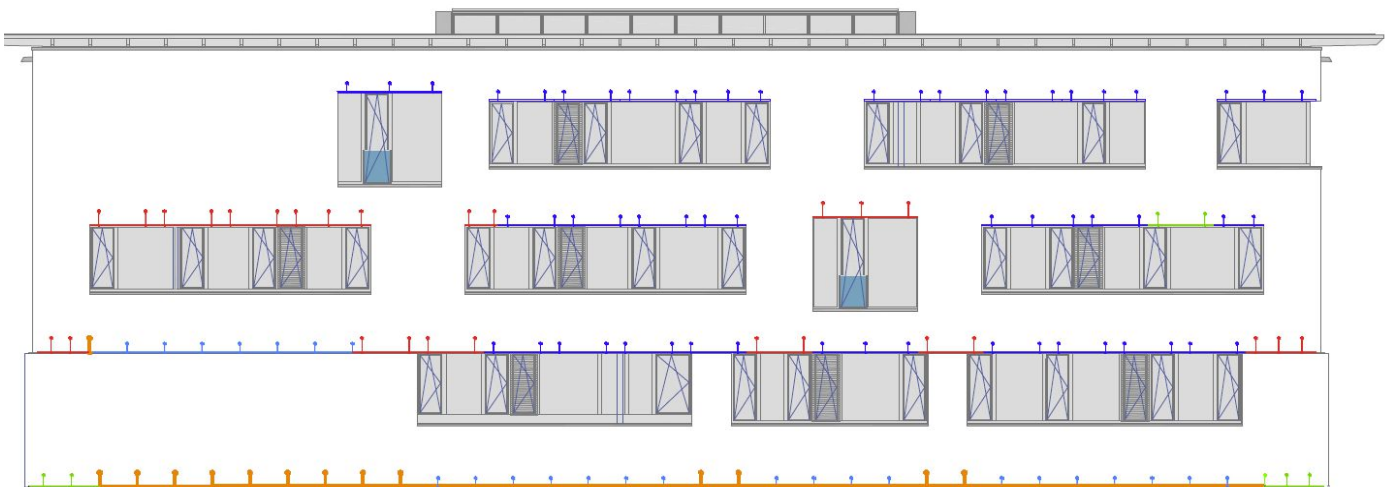
Manufacturer Leviat GmbH
 Liebigstraße 14, 40764 Langenfeld, GERMANY
 Tel.: +49 2173 970-0
 www.Leviat.com

Criteria validated based on reference facade	ΔU [W/m²K]
LC VI	0.0124

In order to validate the suitability, the manufacturer provides a statical calculation and an associated installation plan for the reference facade.

The classification criteria and the load class allocation can be found in the current criteria "Zertifizierte Passivhaus Komponente – Fassadenanker, Version 2.0, 08.05.2017".

Load class / Facade weight		Thermal bridge coefficients [W/K]						
LC	[kN/m ²]	X _{HK5-U-4}	X _{HK5-U-8}	X _{HK5-U-12}	X _{HK5-F-4}	X _{HK5-F-8}	X _{HK5-F-12}	X _{CWT}
VI	1.80	0.0147	0.0154	0.0160	0.0147	0.0154	0.0160	0.0007
Efficiency	ΔU	Quantity / m ²						
[W/(kNK)]	[W/m ² K]	HK5-U-4	HK5-U-8	HK5-U-12	HK5-F-4	HK5-F-8	HK5-F-12	CWT
0.0069	0.0124	0.194	0.020	0.094	0.084	0.003	0.043	7.967



Installation-plan reference facade of the certified component

Load-class (LC)	Facade cladding	Facade weight [kN/m ²]	Efficiency criterion fulfilled?
I	Aluminium laminated	0.10	not evaluated
II	Plastic	0.15	not evaluated
III	Fibre-cement plates	0.20	not evaluated
IV	Acrylic glass	0.25	not evaluated
V	Ceramics	0.30	not evaluated
VI	Clinger facade	1.80	yes