

Certificate

Certified Passive House component

for cool, temperate climate, valid until 31.12.2026

Category: **Facade anchor**
 Manufacturer: **Northern Facades Ltd.**
L4V 1K2 Mississauga, ON, CANADA
 Product name: **ISO Clip**

The following criteria were used in awarding this certificate:

Efficiency Criterion

In a typical application*, the construction fulfills the requirements of

$$\text{Eff.fa} \leq 0.200 \text{ W/(kNK)}$$

Comfort Criterion

The inner surface must be warm enough to prevent mold as well as uncomfortable down-drafts and radiation losses.

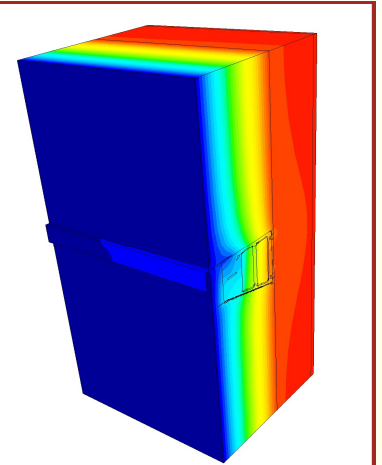
$$\theta_{i,\min} \geq 17^\circ\text{C}$$

Thermal data of the certified component

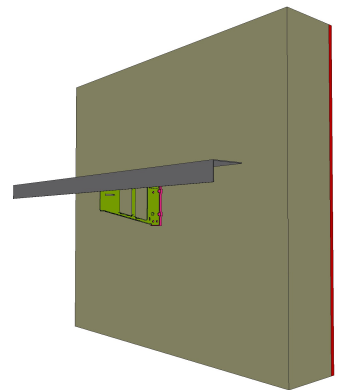
ISO Clip	Thermal bridge coefficient	Minimum interior surface temperature
	χ [W/K]	$\theta_{i,\min}$ [°C]
Fixed point 2 mm	0.0244	19.23

ISO Clip is fabricated from 0.08-inch thick, grade 33 galvanized steel and incorporates a nylon thermal isolator. The bracket is pre-punched for a variety of fastener layouts. The bracket is designed to allow for fixing of both horizontal and vertical girts.

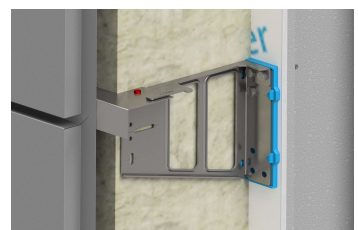
* The criterion has been validated with a representative facade of a school building



Isothermal map fixed point



Model without insulation



Representation

cool, temperate climate



CERTIFIED COMPONENT

Passive House Institute

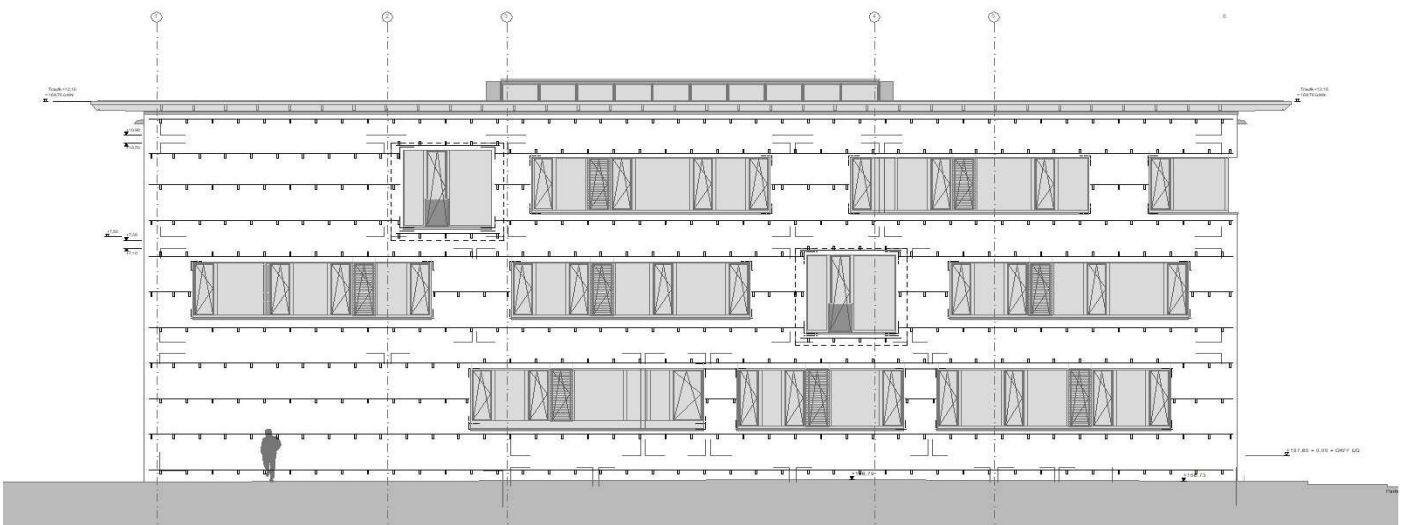
Data sheet Northern Facades Ltd., ISO Clip

Manufacturer Northern Facades Ltd.
 6435 Northwest Dr., L4V 1K2 Mississauga, ON, CANADA
<https://www.northernfacades.com/>

Criteria validated based on reference facade	ΔU [W/m²K]
LC III - V	0.0332

In order to validate the suitability, the manufacturer provides a statical calculation and an associated installation plan for the reference facade. To achieve an U-value of 0.15 W/m²K an additional insulation thickness of 2 cm is necessary for compensation of the thermal bridges.
 The calculations are carried out for a reference facade with 24 cm insulation (0.035 W/(mK)).

Type	Energy efficiency	ΔU	Quantity /m ²	Loadclass
	[W/(kNK)]	[W/m ² K]	FP	[kN/m ²]
ISO-Clip	0.1108	0.0332	1.36	0.3



Installation-plan reference facade of the certified component

Load-class (LC)	Facade cladding	Facade-weight	Efficiency criterion fulfilled?
		[kN/m ²]	
I	Aluminium laminated	0.10	no
II	Plastic	0.15	no
III	Fiber-cement plates	0.20	yes
IV	Acrylic glass	0.25	yes
V	Ceramics	0.30	yes

The classification criteria and the load class allocation can be found in the current criteria "Certified Passive House components – Facade anchors, Version 2.1, 27.05.2021".