

Certificate

valid until 31.12.2025

 **Passivhaus
Institut**
Dr. Wolfgang Feist
Rheinstraße 44/46
D-64283 Darmstadt

**Low Thermal Bridge
Construction:**

**Leviat Balcony Connection HIT-SP MVX
220 mm slab thickness**

**Hersteller: Leviat GmbH
Liebigstraße 14 40764 Langenfeld**

The following criteria were used in awarding this certificate:

Efficiency Criterion

In two typical applications^{*)}, the construction is

$$\Delta U_{WB} < 0.025 \text{ W/(m}^2\text{K)}$$

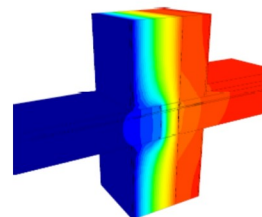
Comfort Criterion

The inner surface must be warm enough to prevent mould as well as uncomfortable down-draught and radiation losses.

$$\theta_{i,min} > 17.00 \text{ } ^\circ\text{C}$$

The following thermal data have been determined:

Leviat HIT ISO-Element	minimum temperature of the inner surface $\theta_{i,min}$ [°C]	thermal bridge coefficient Ψ [W/(mK)]
HIT-SP MVX-0504-22-100-35	18.53	0.17
HIT-SP MVX-0705-22-100-35	18.36	0.20
HIT-SP MVX-0804-22-100-35	18.47	0.18



^{*)} The criterion was validated on both, a row house and a apartment dwelling.
The certificate includes types with minor statical performance. The thermal bridge coefficient can be approximated by linear interpolation.

