

# Certificate

## Certified Passive House component

for cool, temperate climate, valid until 31.12.2026

Passive House Institute  
Dr. Wolfgang Feist  
64283 Darmstadt  
GERMANY

Category: **Facade anchor**  
Manufacturer: **SYSTEa GmbH**  
**24558 Henstedt-Ulzburg, GERMANY**  
Product name: **Beta Universal II**

**The following criteria were used in awarding this certificate:**

### Efficiency Criterion

In two typical applications\*, the construction fulfills the requirements of

$$\Delta U_{WB} \leq 0.010 \text{ W/(m}^2\text{K)}$$

### Comfort Criterion

The inner surface must be warm enough to prevent mould as well as uncomfortable down-drafts and radiation losses.

$$\theta_{i,min} \geq 17^\circ\text{C}$$

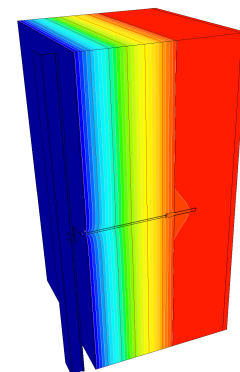
### Thermal data of the certified component

Beta Universal II	thermal bridge coefficient $\chi$ [W/K]	minimum inner surface temperature $\theta_{i,min}$ [°C]
H-,Z- Anchor	0.0042	19.44
H- Anchor	0.0025	19.45
H-,S-,Z- Anchor	0.0051	19.39
H-,S- Anchor	0.0042	19.44

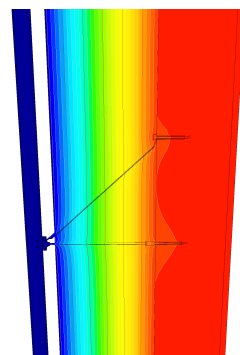
Validation reference buildings	Row House	School building
$\Delta U$ [W/m²K]	0.0043	0.0050

\*The criterion has been validated with two representative buildings a row house and a school building.

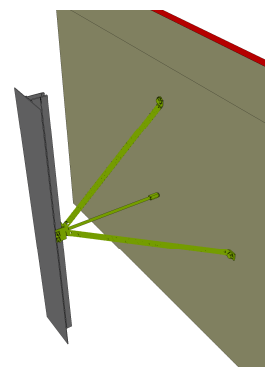
[www.passivehouse.com](http://www.passivehouse.com)



Isothermal map  
H- Anchor



Isothermal map  
H-,S- Anchor



Representation  
H-,S-,Z- Anchor



**CERTIFIED COMPONENT**

Passive House Institute