

Certificate

Certified Passive House Component

for cool, temperate climate, valid until 31.12.2025

Passive House Institute
Dr. Wolfgang Feist
64283 Darmstadt
GERMANY

Category: **Balcony connection**
Slab thickness 180 - 220 mm
Manufacturer: **Schöck Bauteile GmbH**
76534 Baden-Baden, GERMANY
Product name: **Schöck Isokorb® XT Typ SQ**
Schöck Isokorb® XT Typ SK

The following criteria were used in awarding this certificate:

Efficiency Criterion

In two typical applications*, the construction fulfills the requirement of

$$\Delta U_{WB} \leq 0.010 \text{ W/(m}^2\text{K)}$$

Comfort Criterion

The inner surface must be warm enough to prevent mould as well as uncomfortable down-draught and radiation losses.

$$\theta_{i,\min} \geq 17^\circ\text{C}$$

Following heat transmission coefficients χ [W/K] and surface temperatures $\theta_{i,\min}$ [°C] have been validated:

Product	Slab thickness [mm]	χ [W/K]	$\theta_{i,\min}$ [°C]
XT Typ SQ-V1	180	0.062	19.09
XT Typ SQ-V1	220	0.064	19.05
XT Typ SQ-V2	180	0.068	19.04
XT Typ SQ-V2	220	0.069	19.02
XT Typ SQ-V3	180	0.072	19.01
XT Typ SQ-V3	220	0.075	18.99
XT Typ SK-M1V1	180	0.085	19.01
XT Typ SK-M1V1	220	0.089	18.96

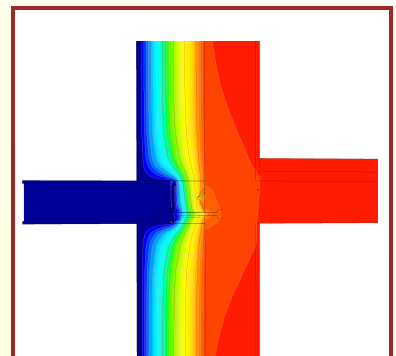
* The criterion was validated on both, a row house and a apartment dwelling.

(according to criteria "balcony connection" v2.1.1)

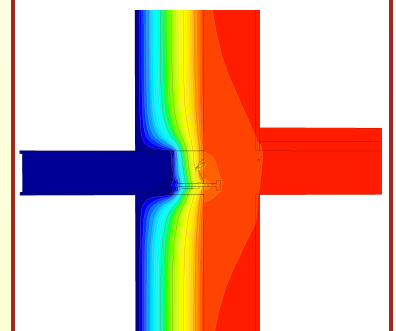
The certificate includes types with minor statical performance.

Thermal bridge coefficients can be approximated by linear interpolation.

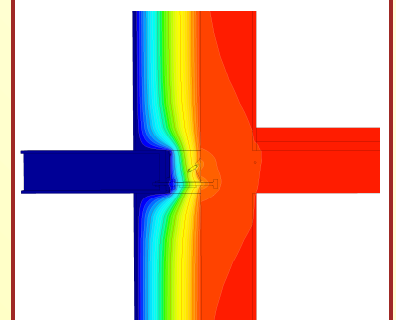
www.passivehouse.com



Isothermal map of the
XT Typ SQ-V1
- H180



Isothermal map of the
XT Typ SQ-V2
- H180



Isothermal map of the
XT Typ SQ-V3 - H180

cool, temperate climate



**CERTIFIED
COMPONENT**

Passive House Institute