

Certificate

Certified Passive House component

for cool, temperate climate, valid until 31.12.2025

Category: **Facade anchor / Corbel**
 Manufacturer: **IG Masonry Support**
Swadlincote, DE11 9EU, UK
 Product name: **IG WMS (Welded Masonry Support)**

The following criteria were used in awarding this certificate:

Efficiency Criterion

In a typical application*, the construction fulfills the requirements of

$$\text{Eff. fa} \leq 0.200 \text{ W/(kNK)}$$

Comfort Criterion

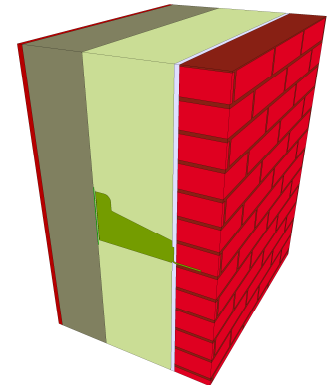
The inner surface must be warm enough to prevent mold as well as uncomfortable down-drafts and radiation losses.

$$\theta_{i,\min} \geq 17^\circ\text{C}$$

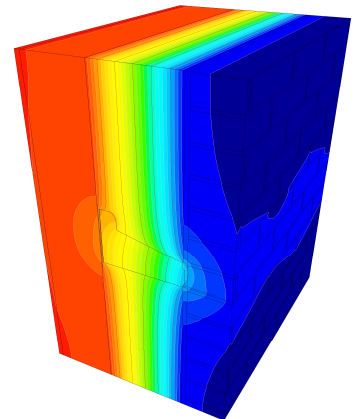
Thermal data of the certified component

IG WMS (Welded Masonry Support)	Thermal bridge coefficient	Minimum interior surface temperature
	X [W/K]	$\theta_{i,\min}$ [°C]
Supporting bracket	0.0392	18.67
Supporting bracket (uninsulated cavity)	0.0474	18.53
Cavity wall ties	0.0007	19.47

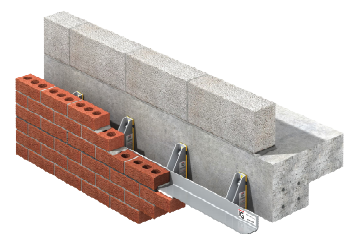
* The criterion has been validated with a representative facade of a school building



Cross section



Isothermal map



Representation

cool, temperate climate



**CERTIFIED
COMPONENT**

Passive House Institute

Data sheet IG Masonry Support - IG WMS (Welded Masonry Support)

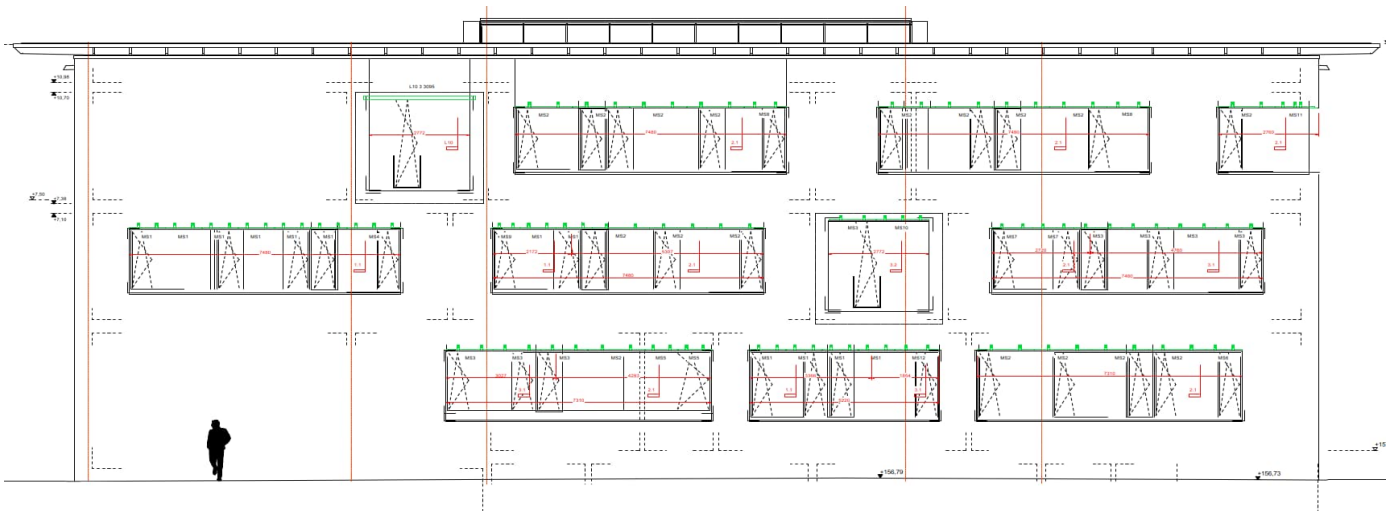
Manufacturer IG Masonry Support
 Cadley Hill Industrial Estate, Ryder Close, Swadlincote, DE11 9EU
 www.igmasonrysupport.com

Criteria validated based on reference facade	ΔU [W/m²K]
LC VI	0.0192

In order to validate the suitability, the manufacturer provides a statical calculation and an associated installation plan for the reference facade.

The calculations are carried out for a reference facade with 24 cm insulation (0.035 W/(mK)).

Load class / Facade weight		Quantity / m ²		[W/(kNK)]
LC / Material	[kN/m ²]	IG WMS	CWT	Eff. fa
6 / Stone	1.80	0.35	8.00	0.0107



Installation-plan reference facade of the certified component (LC VI)

Load-class (LC)	Facade cladding	Facade weight [kN/m ²]	Efficiency criterion fulfilled?
I	Aluminium laminated	0.10	yes
II	ACM	0.15	yes
III	Fiber-cement plates	0.20	yes
IV	Acrylic glass	0,26	yes
V	Ceramics / Stone	0.30 - 0.50	yes
VI	Clinker	1.80	yes

The classification criteria and the load class allocation can be found in the current criteria "Certified Passive House components – Facade anchors, Version 2.1, 27.05.2021".